

# Community Profile

## Fochabers

## Milne's ASG/LMG



**Moray  
Community Planning  
Partnership**





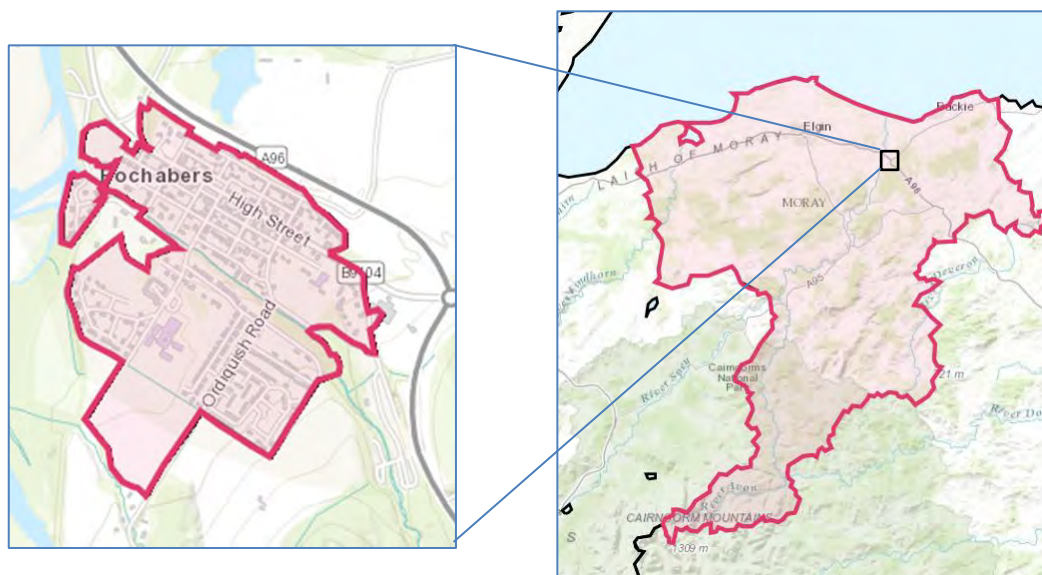
---

# Fochabers, Moray

---

## ***Area profile***

Fochabers is located on the east bank of the River Spey, 10 miles East of Moray's largest town Elgin. The village name comes from the Gaelic words 'feith' meaning bog and 'aber' meaning 'river-mouth'. The village was founded in 1776 by Alexander Gordon, 4<sup>th</sup> Duke of Gordon, on grounds close to Gordon Castle. Fochabers is regarded as one of the best examples of a planned village that were built during the Scottish Enlightenment period in the late 18<sup>th</sup> century. The village is home to the world renowned family-run food manufacturers Baxters. The village lay on the main A96 route between Aberdeen and Inverness until a bypass was constructed and opened in January 2012 at a total cost of £31.5 million.



© Crown Copyright 2016

---

## Table of Contents

<b>1</b>	<b>Population Structure</b> .....	<b>4</b>
1.1	Age profile .....	4
1.2	Marital Status .....	6
<b>2</b>	<b>Identity</b> .....	<b>7</b>
2.1	Ethnicity .....	7
2.2	Country of Birth .....	8
2.3	Length of residency for residents born overseas .....	9
2.4	Language .....	9
<b>3</b>	<b>Housing</b> .....	<b>10</b>
3.1	Tenure and House Type .....	11
3.2	Transport .....	12
<b>4</b>	<b>Economy and Labour</b> .....	<b>13</b>
4.1	Industry .....	14
4.2	Occupation .....	15
4.3	Unemployment .....	16
4.4	Transport .....	17
<b>5</b>	<b>Education</b> .....	<b>18</b>
5.1	Attainment .....	19
5.1.1	S4 Attainment .....	19
5.1.2	S5 Attainment .....	20
5.2	Leaver Destination .....	21
<b>6</b>	<b>Health and Social care</b> .....	<b>22</b>
6.1	Health .....	22
6.1.1	Maternity .....	25
6.2	Social Care .....	26
6.3	Hospital Emergency Admissions .....	27
<b>7</b>	<b>Antisocial Behaviour</b> .....	<b>28</b>
<b>8</b>	<b>Access to Service</b> .....	<b>29</b>
8.1	Drive time to (2012 data) .....	29
8.2	Public transport to (2012 data) .....	29
<b>9</b>	<b>Summary</b> .....	<b>30</b>

---

Table 1 Age structure of Fochabers .....	4
Table 2 60 and over in 2001 and 2011 .....	5
Table 3 Marital Status .....	6
Table 4 Ethnicity .....	7
Table 5 Country of birth .....	8
Table 6 Religion .....	8
Table 7 Length of residence in the UK .....	9
Table 8 Household Composition .....	10
Table 9 Tenure and House Type .....	11
Table 11 Cars per household .....	12
Table 12 Economic Activity .....	13
Table 13 Employment by Industry .....	14
Table 14 Occupation .....	15
Table 15 Travel to Work .....	17
Table 16 Education Facts .....	18
Table 17 Travel to study .....	18
Table 18 Highest qualification .....	19
Table 18 S4 Attainment .....	19
Table 19 S5 Education Attainment.....	20
Table 20 Leaver Destination .....	21
Table 22 Self-assessed Health .....	22
Table 23 Disability .....	22
Table 24 Long Term health Conditions .....	23
Table 25 Health Condition Prevalence rates by GP Practice .....	24
Table 26 Teenage Pregnancies .....	25
Table 27 Provision of Unpaid Care .....	26
Table 28 Emergency Admissions .....	27
Table 29 Number of Antisocial Behaviour Complaints per 1,000 population (2012-14) .....	28
Table 30 Crime Rates .....	28
Table 31 Drive Time .....	29
Table 32 Public Transport time to .....	29
Table 33 SIMD 2012 quintile ranking for the data zones which cover the Fochabers area.	30

Figure 1: Population profile of Fochabers and Moray at the 2001 and 2011 censuses.....	5
Figure 2: % of people employed in each of the groupings at the 2001 and 2011 censuses.	16

---

# 1 Population Structure

---

## 1.1 Age profile

Fochabers had a population of 1,728 in 2011<sup>1</sup> which is an increase of over 15% from 1,499 residents in 2001. Over the same period, in comparison to Moray, Fochabers population grew at over twice the rate. The age profile of Fochabers shows that the median age, in 2011, for females was 48 and 43 for males, respectively five and two years higher than the Moray average.

**Table 1 Age structure of Fochabers** <sup>2</sup>

Age	Fochabers	Moray	Scotland
% 0 to 4 years old	4.9	5.6	5.5
% 5 to 15 years old	13.2	12.6	11.8
% 16 to 29 years old	13.6	16.1	18.5
% 30 to 44 years old	17.1	19.1	20.0
% 45 to 59 years old	21.0	21.3	21.1
% 60 to 74 years old	19.0	16.9	15.5
% 75 years old and over	11.1	8.4	7.7

- From table 1 above it can be seen that just over 50% of the Fochabers population were aged 45 years and over, almost 5% higher than the Moray average. However, when comparing against 2001 population figures the proportion of Fochabers residents aged over 45 has only grown by 2.3%, less than half the overall Moray rate which grew by 5.9% over the 10 year period.
- Fochabers has experienced no overall change since 2001 in the proportion of the population aged under 30, compared to a 1.7% decline in Moray. However, the actual proportion of residents aged under 30 in Fochabers (31.7%) remains well below that for Moray (34.3%) and nationally (35.8%).
- For Fochabers the age categories where there have been the largest changes since the 2001 census are the proportion of 30 to 44 year olds where there has been a 2.4% decrease (Moray -4.2%), and a 3.9% increase in the 60 to 74 years age bracket (Moray +2.6%).

---

<sup>1</sup> 2011 census

<sup>2</sup> 2011 census

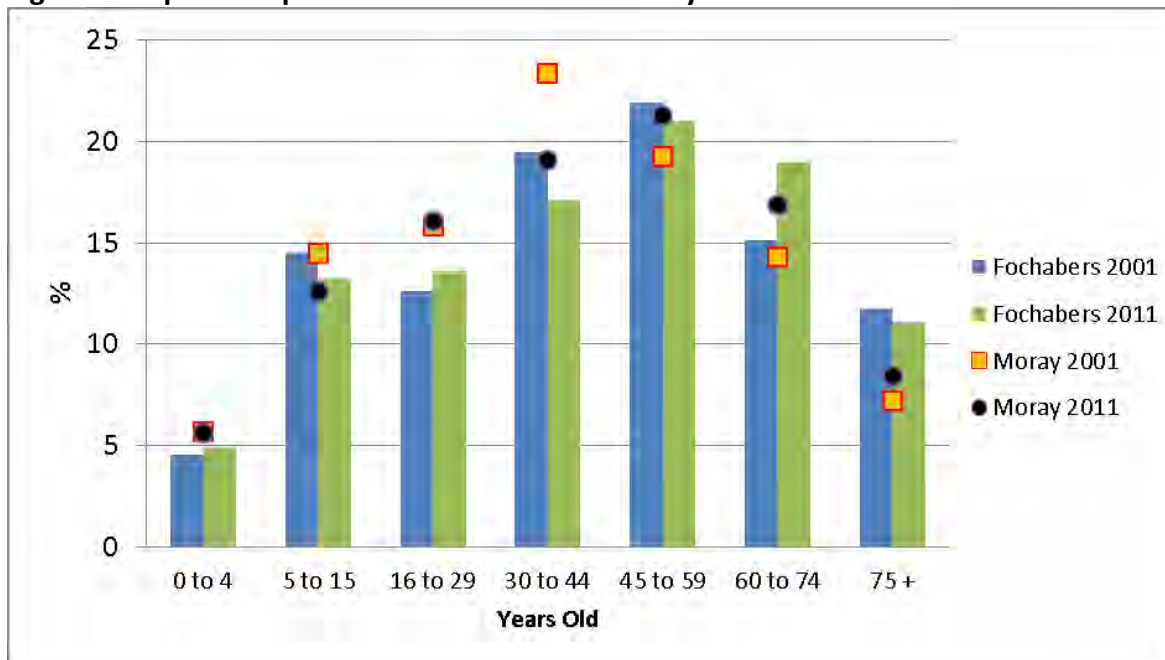
- Table 2 below shows that there has been a 3.2% increase in the percentage of population aged 60 years and over in Fochabers since 2001, with 3 out of 10 residents aged 60 or above. Moray experienced a slightly higher increase at 3.8% (to 25.3%) while nationally there has been a slower increase at 2.1% (to 23.2%).

**Table 2 60 and over in 2001 and 2011**

	Fochabers	Moray	Scotland
% 60 and over 2001	26.9	21.5	21.1
% 60 and over 2011	30.1	25.3	23.2

- Figure 1 below shows that Fochabers population changes since 2001 have generally followed the Moray picture, however there are a couple of exceptions with an actual decline of those aged between 45 to 59 and 75+ in Fochabers compared to increases in these categories across Moray. The falls in these two categories in Fochabers have largely been countered by the significant increase in those aged 60 to 74. The graph shows Fochabers to have an older profile than Moray although the proportion of older people in Fochabers is not increasing as quickly as the rest of Moray.

**Figure 1: Population profile of Fochabers and Moray at the 2001 and 2011 censuses**



- The largest population group in Fochabers remains that of the 45 to 59 year olds (21%), however the second largest proportion is now the 60 to 74 year old group (19%) while in 2001 this was the 30 to 44 year olds (down from 19.5% to 17.1%).

---

## 1.2 Marital Status

**Table 3 Marital Status**<sup>3</sup>

Marital status	Fochabers	Moray	Scotland
All people aged 16 and over	1,415	76,251	4,379,072
% Single (never married or never registered a same-sex civil partnership)	26.1	28.8	35.4
% Married or in a registered same-sex civil partnership	51.2	51.8	45.4
% Separated (but still legally married or still legally in a same-sex civil partnership)	4.2	3.1	3.2
% Divorced or formerly in a same-sex civil partnership which is now legally dissolved	8.2	8.5	8.2
% Widowed or surviving partner from a same-sex civil partnership	10.2	7.9	7.8

- As with Moray, slightly over 50% of Fochabers adults are married or in a registered same-sex civil partnership, compared with a national rate of 45.4%. There has been a decline in those married or in civil partnerships across Fochabers, Moray and Scotland since 2001. While the proportion of adults who have never married or never registered a same-sex civil partnership has increased at a marginally higher rate than Moray and Scotland since 2001, the actual proportion of single adults remains lower in Fochabers.
- The proportion of separated adults remains relatively small in Fochabers, as is the case for Moray and nationally. However, there has been an increase of 1.4% in Fochabers between 2001 and 2011, compared to a small decrease nationally and no change for Moray.
- Fochabers has a higher percentage of adults that are widowed or a surviving partner from a same-sex partnership at 10.2%, compared to Moray (7.9%) and Scotland (7.8%). This is largely unsurprising, as noted above Fochabers has a larger proportion of its population aged 60 and over (30.1%) compared to Moray (25.3%) and Scotland (23.2%).

---

<sup>3</sup> 2011 census



---

## 2 Identity

---

### 2.1 Ethnicity

**Table 4 Ethnicity**<sup>4</sup>

Ethnicity	Fochabers	Moray	Scotland
All people	1,728	93,295	5,295,403
% White - Scottish	84.8	77.7	84.0
% White - Other British	13.0	18.0	7.9
% White - Irish	0.5	0.5	1.0
% White - Polish	0.1	1.1	1.2
% White - Other	1.0	1.7	2.0
% Asian, Asian Scottish or Asian British	0.2	0.6	2.7
% Other ethnic groups	0.4	0.5	1.3
Percentage of households where not all persons are in same ethnic group category	11.7	14.5	10.6

- Fochabers has a higher proportion of White-Scottish (84.8%) than Moray (77.7%) and is more in line with the national average (84%).
- While Fochabers (13%) has a higher percentage of residents who are “White–Other British” than the national average (7.9%), this is well below the Moray average of 18%. The high proportion of “Other British” ethnicity in Moray is largely due to the large number of personnel with this ethnicity at the RAF and Army bases in Moray. Also, there is some evidence to support the theory that there is some inward migration of people from other parts of the UK who are choosing Moray as a place to retire to.
- Fochabers (2.2%) has a much smaller proportion of non-British residents compared to Moray (4.4%) and Scotland (8.2%).
- There is a lower proportion of people in Fochabers within households who are not of the same ethnic group (11.7%) in comparison to Moray (14.5%), although this is slightly higher than Scotland (10.6%).

---

<sup>4</sup> 2011 census

---

## 2.2 Country of Birth

**Table 5 Country of birth** <sup>5</sup>

Country of birth	Fochabers	Moray	Scotland
All people	1,728	93,295	5,295,403
% Scotland	80.9	75.4	83.3
% England	14.2	17.8	8.7
% Wales	0.7	0.9	0.3
% Northern Ireland	0.5	0.7	0.7
% Republic of Ireland	0.2	0.2	0.4
% Other EU countries (inc UK part not specified)	1.3	2.9	2.6
% Other countries	2.2	2.1	4

- The country of birth data largely correlates with the previous ethnicity section, with Fochabers having a higher percentage of the population born in Scotland compared to Moray, while there is a lower rate of residents born out with the UK.

**Table 6 Religion** <sup>6</sup>

Religion	Fochabers	Moray	Scotland
All people	1,728	93,295	5,295,403
% Church of Scotland	38.4	34.0	32.4
% Roman Catholic	6.7	6.6	15.9
% Other Christian	5.8	9.4	5.5
% Muslim	0.0	0.3	1.4
% Other religions	0.5	0.9	1.1
% No religion	42.4	41.2	36.7
% Not stated	6.1	7.7	7.0

- The proportion of the Fochabers population who are Church of Scotland is higher than Moray and the national average.
- Conversely Fochabers has a slightly higher proportion of people stating that they have no religious beliefs than Moray and proportionately over 5% more than Scotland.
- Fochabers has less than half the proportion of people stating their religion as Catholic in comparison to Scotland.
- Fochabers also has proportionally fewer residents with Muslim or other religious beliefs.

---

<sup>5</sup> 2011 census

<sup>6</sup> 2011 census

---

## 2.3 Length of residency for residents born overseas

**Table 7 Length of residence in the UK** <sup>7</sup>

Length of residence in UK	Fochabers	Moray	Scotland
All people born outside the UK	63	4,883	369,284
% Resident in UK for less than 2 years	6.3	14.3	22.1
% Resident in UK for 2 years or more but less than 5 years	14.3	20.2	21.7
% Resident in UK for 5 years or more but less than 10 years	22.2	16.5	18.8
% Resident in UK for 10 years or more	57.1	49.0	37.4

- At the time of the 2011 census more than three quarters of the Fochabers population who were born outside of the UK had resided in the UK for five years or more, significantly higher than both Moray (65.5%) and Scotland (56.2%). However, in comparison to both Moray (5.2%) and Scotland (7%), Fochabers has a smaller proportion of residents who were born outside of the UK with only 3.7%.

## 2.4 Language

- 98.8% of the Fochabers residents aged 3 and over speak English well or very well. Moray and Scotland have 98.5% and 98.6% of their respective populations who speak English very well.
- There is a lower percentage of the Fochabers (4.5%) population who use a language other than English at home compared to the Moray average (6.2%), although it is slightly higher than Scotland (3.9%).
- 47.1% of the Fochabers residents, who are over three years old, are able to speak Scots<sup>8</sup> compared to 45.3% for Moray and 30.1% nationally. The census does not ask about the Doric dialect which is commonly spoken in the North East of Scotland but anecdotal evidence is that the Doric dialect of Scots is by far the main dialect spoken in Moray. This suggests that a large proportion of the residents have family links to the area over several generations.

---

<sup>7</sup> 2011 census

<sup>8</sup> Scots is the collective name for Scottish dialects

---

### 3 Housing

---

Household composition is important information to determine local services provided by the Council, its partners and the third sector.

**Table 8 Household Composition**<sup>9</sup>

Household Composition	Fochabers	Moray	Scotland
Total number of households (with residents)	797	40,062	2,372,777
% One person household - Aged 65 or over	18.1	13.7	13.1
% One person household - Aged under 65	17.6	16.4	21.6
% One family only: Lone parent: With dependent children	6.8	5.7	7.2
% One family only: Lone parent: All children non-dependent	3.1	3.5	3.9
% One family only: Married or same-sex civil partnership couple: With dependent children	13.8	15.9	13.6
% One family only: Married or same-sex civil partnership couple: No dependent children	20.5	21.7	18.4
% One family only: Cohabiting couple: With dependent children	3.9	4.0	3.7
% One family only: Cohabiting couple: No dependent children	2.5	5.5	5.5
% Other households: All full-time students	0.0	0.0	0.9
% Other households: All aged 65 and over	10.9	9.7	7.8
% Other households: Other	2.9	3.9	4.4

- With 1,728 people in 797 households, Fochabers has a similar average occupancy rate (2.2 residents per household) as Moray (2.3) and Scotland (2.2).
- Fochabers has a high proportion of households where all residents are aged 65 or over. 18.1% of households are occupied by one person only who are aged 65 or over, above both Moray (13.7%) and National (13.1%) rates. Additionally Fochabers has a high proportion of households where all occupants are aged 65 or over, accounting for 10.9% of households compared to Moray (9.7%) and nationally (7.8%). The higher rate of older households generally reflects the higher proportion of Fochabers residents aged 60 and over as noted in Table 1 (page section 1.1).

---

<sup>9</sup> 2011 census

### 3.1 Tenure and House Type

**Table 9 Tenure and House Type**<sup>10</sup>

Tenure	Fochabers	Moray	Scotland
Total number of households (with residents)	797	40,062	2,372,777
% Owned	65.4	65.9	62.0
% Rented from Council	15.4	14.1	13.2
% Other social rented	8.9	5.2	11.1
% Private rented	9.0	12.6	12.4
% Living rent free	1.3	2.1	1.3
House Type			
% House or bungalow	91.6	87.0	63.4
% Detached	41.4	37.2	21.9
% Semi - detached	29.9	31.4	22.8
% Terraced house (including end-terrace)	20.3	18.4	18.6
% Flat or maisonette or apartment	8.4	12.6	36.4
% Caravan or other mobile or temporary structure	0.0	0.4	0.2

- House ownership in Fochabers (65.4%) is similar to the Moray average (65.9%) and is higher than the national average (62%).
- Fochabers has a higher percentage of council rented houses at 15.4% compared to Moray (14.1%) and Scotland (13.2%). Conversely there is a lower rate of private rented accommodation at 9%, below both Moray (12.6%) and Scotland (12.4%).
- In Fochabers, between the 2001 and 2011 censuses the total number of households increased by 16.5% (increasing from 684 to 797) slightly above the population rate increase of 15.3%. The rate of increase in households for Moray was lower at 11.9%, although this is well above the overall population increase of 7.3%.
- Over the 10 year period house ownership has increased by 3.4%. Over the same period there has been a decrease (6.5%) in properties rented from the council and an increase (5.4%) in properties either socially or privately rented. The apparent decrease in council housing is largely due to the overall increase in housing stock through new builds, with the majority of these being built for the private sector. The actual number of available council houses in Fochabers fell by 27 since 2001 to 123.
- Detached properties are the most common type of dwelling in Fochabers with over 40% of households living in this type of accommodation.

<sup>10</sup> 2011 census

- As like other small villages in Moray there are considerably less flats / maisonettes / apartments in Fochabers (8.4%) compared to nationally (36.4%).

## 3.2 Transport<sup>11</sup>

**Table 10 Cars per household**

Car or van availability	Fochabers	Moray	Scotland
Total number of households (with residents)	797	40,062	2,372,777
% No car or van	20.2	19.9	30.5
% 1 car or van	46.0	46.9	42.2
% 2 cars or vans	27.7	25.5	21.6
% 3 or more cars or vans	6.0	7.7	5.6

- Like Moray, around 20% of households in Fochabers have no car or van, 10% below the national average. Between 2001 and 2011 censuses there has been a 7.7% decrease in the number of Fochabers households with no car or van, this compares to a 3.7% decrease both in Moray and nationally.
- 46% of Fochabers households have access to one car or van, slightly above the national rate (42.2%) and in line with Moray (46.9%).
- There has been a subsequent increase in the proportion of households with 2 or more cars or vans, with a 7.1% increase in Fochabers compared to increases of 4.3% in Moray and 3% in Scotland.

<sup>11</sup> 2011 census

## 4 Economy and Labour

**Table 11 Economic Activity**<sup>12</sup>

Economic activity	Fochabers	Moray	Scotland
All persons 16 to 74	1,223	68,410	3,970,530
% Economically active	67.5	71.5	69.0
% Employees - part-time	15.0	15.7	13.3
% Employees - full-time	39.2	41.4	39.6
% Self-employed	7.2	8.4	7.5
% Unemployed	4.0	3.9	4.8
% Full-time student - employed	1.9	1.7	2.9
% Full-time student - unemployed	0.2	0.4	0.8
% Economically inactive	32.5	28.5	31.0
% Retired	19.5	16.3	14.9
% Student	4.2	3.4	5.5
% Looking after home or family	3.4	3.9	3.6
% Long-term sick or disabled	3.7	3.2	5.1
% Other	1.6	1.5	1.9

- Fochabers (67.5%) has a relatively lower rate of residents who are economically active when compared with Moray (71.5%), although this is generally in line with neighbouring Mosstodloch (68.4%) and Garmouth (67.3%). The higher economically inactive rates for all three areas can largely be explained by the greater proportion of retired residents; with Fochabers (19.5%), Mosstodloch (19.9%) and Garmouth (23.6%) all well above Moray (16.3%).
- The proportion of Fochabers residents in full-time or part-time employment (54.2%) is below the Moray average (57.1%), although above that of Scotland (52.9%).

<sup>12</sup> 2011 census

## 4.1 Industry

**Table 12 Employment by Industry** <sup>13</sup>

Industry	Fochabers	Moray	Scotland
All persons aged 16 to 74 in employment	774	45,983	2,516,895
% A. Agriculture, forestry and fishing	1.7	3.2	1.7
% B. Mining and quarrying	2.5	2.9	1.4
% C. Manufacturing	11.1	12.1	8.0
% D. Electricity, gas, steam and air conditioning supply	0.3	0.3	0.8
% E. Water supply; sewage, waste management and remediation activities	0.5	0.6	0.8
% F. Construction	8.9	9.1	8.0
% G. Wholesale and retail trade; repair of motor vehicles and motorcycles	16.0	14.8	15.0
% H. Transport and storage	3.6	4.2	5.0
% I. Accommodation and food service activities	6.2	6.0	6.3
% J. Information and communication	1.4	1.1	2.7
% K. Financial and insurance activities	0.8	1.2	4.5
% L. Real estate activities	0.5	1.1	1.2
% M. Professional scientific and technical activities	3.0	3.5	5.2
% N. Administrative and support service activities	3.5	3.2	4.3
% O. Public administration and defence; compulsory social security	9.0	11.9	7.0
% P. Education	12.5	7.9	8.4
% Q. Human health and social work activities	14.7	12.7	15.0
% R, S, T, U. Other	3.7	4.1	4.9

- The four main employment categories for Fochabers residents are: Wholesale and retail; repair of motor vehicles and motorcycles (16.0%), Human health and social work activities (14.7%), Education (12.5%) and Manufacturing (11.1%). The proportion of employment by industry is largely similar to the Moray profile, with the exception of Education where Fochabers is 4.6% above Moray and Public administration and defence where Fochabers is 2.9% below Moray. Fochabers also has a higher proportion employed in Human health and social work activities at 14.7% compared to Moray (12.7%).

<sup>13</sup> 2011 census



---

## 4.2 Occupation

**Table 13 Occupation** <sup>14</sup>

Occupation	Fochabers	Moray	Scotland
All persons 16 to 74 in employment	774	45,983	2,516,895
% Managers, directors and senior officials	7.8	7.6	8.4
% Professional occupations	15.5	11.4	16.8
% Associate professional and technical occupations	12.0	14.7	12.6
% Administrative and secretarial occupations	8.7	8.4	11.4
% Skilled trades occupations	14.9	16.6	12.5
% Caring, leisure and other service occupations	10.1	10	9.7
% Sales and customer service occupations	8.3	8.1	9.3
% Process, plant and machine operatives	9.7	10.4	7.7
% Elementary occupations	13.2	12.8	11.6

- The main occupations for Fochabers residents are Professional (15.5%), Skilled trades (14.9%), Elementary (13.2%), and Associate professional and technical (12%). Fochabers has a notably higher proportion of residents in professional occupations (15.5%) than Moray (11.4%), although there is a lower proportion (12%) employed in associate professional and technical occupations compared to Moray (14.7%).
- When compared to neighbouring Mosstodloch, Fochabers has significantly more employed in professional occupations compared to Mosstodloch 8.5%; while there is a larger proportion of Mosstodloch residents employed in 'low wage' jobs such as process, plant and machine operatives or in elementary occupations (27.9%) compared to Fochabers residents (22.9%).
- As with Scotland and Moray, Fochabers has also seen a decline in the proportion of people employed as Managers, directors and senior officials between the 2001 and 2011 censuses, reducing by 3.8%. However this has been balanced by the increase in people employed within Professional occupations where the proportion has increased by 3.2% over the same period.
- Figure 2 (below) shows the change in the Fochabers occupation rates between the 2001 and 2011 census.

---

<sup>14</sup> 2011 census

**Figure 2: % of people employed in each of the groupings at the 2001 and 2011 censuses.**



- Over the 10 year period there have been increases in the proportion of Professional occupations, Skilled trades occupations, Caring & Leisure services and Sales & Customer services. There have been declines in Elementary occupations, Associate professional and technical occupations, Administrative and secretarial occupations and Managers, directors and senior officials.

### 4.3 Unemployment

- At the time of the 2011 census unemployment was marginally higher in Fochabers (4.0%) in comparison to Moray (3.9%) but lower than Scotland (4.8%).
- Unemployment in Fochabers has increased at a higher rate (1.1%) than both Moray (0.4%) and Scotland (0.8%) between the two census periods.
- Of the unemployed population in Fochabers, 36.7% were young people aged between 16 and 24 years old. This is higher than Moray (34.7%) and Scotland (30.2%).

---

## 4.4 Transport

**Table 14 Travel to Work** <sup>15</sup>

Travel to work	Fochabers	Moray	Scotland
All persons aged 16 to 74 who were in employment (excluding full-time students)	751	44,816	2,400,925
% Car (including passengers car pools and taxis)	70.4	63.7	62.4
% Train	1.6	2.2	3.7
% Bus	4.0	3.4	10.0
% On foot	9.5	12.2	9.9
% Other	4.3	6.3	3.1
% Works mainly at or from home	10.3	12.1	10.8

- Proportionately Fochabers had a notably higher (70.4%) rate of people travelling to work by car compared with Moray (63.7%) and Scotland (62.4%). This suggests that the majority of job opportunities are out with the village. The large percentage of residents travelling to work by car also reflects the high car ownership rate in Fochabers, with a particularly high percentage of households owning two or more cars or vans (see section 3.2).
- While Fochabers has a higher proportion of residents in elementary occupations, which is likely influenced by the locally based Baxters Food company, the proportion actually walking to work is below that for Moray and Scotland.
- Fochabers (4%) also has a relatively low percentage of the workforce travelling by bus to work, despite being well served by stagecoach to the A96 and A98 routes. The rate is only slightly above the figure for Moray (3.4%) but well below that for Scotland (10%).
- Unsurprisingly there are few residents using rail as their main mode of transport to work, with the nearest stations in Keith (7 miles) and Elgin (9 miles).

---

<sup>15</sup> 2011 census

## 5 Education

**Table 15 Education Facts**<sup>16</sup>

Interesting facts	Fochabers	Moray	Scotland
Percentage 16 to 17 year olds in education	73.6	76.6	79.8
Percentage of households where no person aged 16 to 64 has a highest level of qualification of Level 2 or above, or no person aged 16-18 is a full-time student	51.1	49.0	47.2

- Fochabers has a lower proportion (73.6%) of 16-17 year olds in full time education than the rest of Moray (76.6%) and Scotland (79.8%), indicating that proportionately more pupils are leaving school early.
- Fochabers (51.1%) also has a larger proportion of households where no person aged 16 to 64 has a highest level of qualification of level 2 or above, or no person aged 16-18 is a full-time student – compared to Moray (49%) and Scotland (47.2%).

**Table 16 Travel to study**<sup>17</sup>

Travel to study	Fochabers	Moray	Scotland
All people aged 4 and over studying	313	15,771	996,282
% Car (including passengers car pools and taxis)	18.5	23.2	22.3
% Train	0.6	1.0	2.9
% Bus	8.6	20.3	21.5
% On foot	57.8	41.5	39.1
% Other	0.0	2.0	1.7
% Studies mainly at or from home	14.4	12.0	12.4

- More than half (57.8%) of Fochabers students walk to their place of study, notably higher than Moray (41.5%) and Scotland (39.1%). Fochabers is served by both a primary and secondary school within the village.
- Considerably less students (8.6%) use bus transport to travel to their place of study compared to Moray (20.3%) and Scotland (21.5%).
- The largest change since 2001 is a decrease in the percentage walking to their place of study, down by 9.3% from 67.1%. There has been an equivalent increase in the number of students studying mainly from home, increasing by 8.5% to 14.4% in 2011.

<sup>16</sup> 2011 census

<sup>17</sup> 2011 census

**Table 17 Highest qualification**<sup>18</sup>

Highest qualification <sup>19</sup>	Fochabers	Moray	Scotland
All persons aged 16 and over	1,415	76,251	4,379,072
% With no qualifications	24.7	26.7	26.8
% Highest qualification attained - Level 1	23.3	26.3	23.1
% Highest qualification attained - Level 2	14.1	14.4	14.3
% Highest qualification attained - Level 3	9.1	9.9	9.7
% Highest qualification attained - Level 4 and above	28.9	22.7	26.1

- There are a smaller proportion of people over 16 with no qualifications (24.7%) in Fochabers than there is in both Moray (26.7%) and Scotland (26.8%).
- While Fochabers has a slightly lower rate of people who have achieved a highest attainment level at either 1, 2 or 3, there is a notably higher percentage of Fochabers residents (28.9%) who have achieved a Level 4 qualification or above when compared to Moray (22.7%) or Scotland (26.1%).

## 5.1 Attainment

### 5.1.1 S4 Attainment

**Table 18 S4 Attainment**<sup>20</sup>

Name	Fochabers	Moray	Scotland
Total S4 Students from 2008/9 to 2012/13 <sup>21</sup>	108	5,499	280,909
S4: No pupils with 5 awards at SCQF level 5 and above	43	2,161	103,795
Percentage of pupils with 5 awards at SCQF level 5 and above	39.8%	39.3%	36.9%
Average S4 Tariff	196	198	185

- Over the five years between 2008/9 and 2012/13, 39.8% of S4 pupils from Fochabers attained five awards at SCQF level 5 and above. This is above the Moray average (39.3%) and well above the Scottish average (36.9%).

<sup>18</sup> Census 2011 <http://www.scotlandscensus.gov.uk/variables-classification/highest-level-qualification>

<sup>19</sup> The following table shows what the levels used in the census mean.

Level 1	Standard Grade (equivalent or above)	Level 2	Higher (equivalent or above)
Level 3	HNC (equivalent or above)	Level 4	Degree (equivalent or above)

<sup>20</sup> Source – Scottish Neighbourhood Statistics - <http://www.sns.gov.uk>

<sup>21</sup> The sample is taken over five years to comply with the other monographs of other areas/localities of Moray. Nearly all of those other areas did not have sufficient numbers in a single year to make a comparison with the larger data sets of Moray and Scotland.

- During the same period the average tariff score achieved was 196, slightly below the Moray average of 198 but above that for Scotland (185).

### 5.1.2 S5 Attainment

**Table 19 S5 Education Attainment<sup>22</sup>**

	<b>Fochabers</b>	<b>Moray</b>	<b>Scotland</b>
Total Students for S5	69	4,380	235,893
S5: No pupils with 1 award at SCQF level 6 and above : 2008/9 - 2012/13	47	2,521	128,253
S5: Percentage of pupils with 1 award at SCQF level 6 and above : 2008/9 - 2012/13	68.1%	57.6%	54.4%
S5: No pupils with 3 award at SCQF level 6 and above : 2008/9 - 2012/13	28	1,399	74,789
S5: Percentage of pupils with 3 award at SCQF level 6 and above : 2008/9 - 2012/13	40.6%	31.9%	31.7%
S5: No pupils with 5 award at SCQF level 6 and above : 2008/9 - 2012/13	15	595	34667
S5: Percentage of pupils with 5 award at SCQF level 6 and above : 2008/9 - 2012/13	21.7%	13.6%	14.7%
5 year Tariff average	417	365	347

- Over the five year period between 2008/9 and 2012/13 the proportion of Fochabers pupils in S5 attaining at least one award at SCQF level 6 from Milne's High School (68.1%) was markedly higher than the rest of Moray (57.6%) and nationally (54.4%). A similar trend is true for S5 pupils achieving 3 or 5 awards at SCQF level 6 and above.
- The successful achievement rate is also reflected in the average tariff score for the five year period which came out at 417, well above that for Moray (365) and Scotland (347).

<sup>22</sup> The sample is taken over five years to comply with the other monographs of other areas/localities of Moray. Nearly all of those other areas did not have sufficient numbers in a single year to make a comparison with the larger data sets of Moray and Scotland.

## 5.2 Leaver Destination

**Table 20 Leaver Destination** <sup>23</sup>

	<b>Fochabers</b>	<b>Moray</b>	<b>Scotland</b>
Total leavers	105	5,237	265,363
Higher Education	32.4%	33.3%	36.0%
Further Education	36.2%	27.2%	27.1%
Training <sup>24</sup>	1.0%	1.5%	5.7%
Employment	19.1%	28.7%	19.7%
Total Positive	88.6%	90.7%	88.4%
Unemployment and seeking employment or training	8.6%	7.4%	9.6%
Unemployed not seeking employment or training	2.9%	1.7%	1.3%
Total Negative Destination	11.4%	9.1%	10.9%
Unknown	0.0%	0.2%	0.6%

- School leavers' destination data from Milne's High in the five years between 2008/9 and 2012/13, shows that a lower proportion went to positive destinations (88.6%) than Moray (90.7%), although slightly above the national average (88.4%).
- While attainment results at S4 and S5 compare well against both Moray and Scotland averages, surprisingly a lower percentage of pupils go onto Higher Education (32.4%) from Fochabers than Moray (33.3%) and Scotland (36%). It appears that the majority decide to go onto Further Education to continue their studies with 36.2% of Fochabers leavers doing so over the 5 year period, well above the Moray (27.2%) and Scotland (27.1%) averages.
- Proportionately fewer Fochabers (19.1%) school leavers enter employment straight away, significantly below the Moray average (28.7%) and below that for Scotland (19.7%).
- Fochabers (11.4%) has a slightly higher rate of school leavers finding themselves unemployed, 2.3% above the Moray average.

<sup>23</sup>Data for the 5 year period from 2008/09-2012/13, Source – Scottish Neighbourhood Statistics - <http://www.sns.gov.uk>

<sup>24</sup> The "Training" destination shown in the table above refers to destinations where there is no employer or no formal education establishment (For example a government training scheme). As these opportunities occur less frequently away from the large centres of population the uptake in Moray is small.

---

## 6 Health and Social care

---

### 6.1 Health

**Table 21 Self-assessed Health** <sup>25</sup>

	Fochabers	Moray	Scotland
All people	1,728	93,295	5,295,403
% Very good	49.3	53.7	52.5
% Good	34.3	31.3	29.7
% Fair	12.3	11.1	12.2
% Bad	3.1	2.9	4.3
% Very bad	0.9	0.9	1.3

- 83.6% of Fochabers residents described themselves as having Very good or Good health which is lower than Moray (85.0%), and slightly higher than the national average (82.2%).
- Fochabers residents describing themselves as having Bad or Very bad health (4.0%) are proportionately slightly higher than Moray (3.8%) but lower than Scotland (5.6%).

**Table 22 Disability** <sup>26</sup>

Long-term health problem or disability	Fochabers	Moray	Scotland
All people	1,728	93,295	5,295,403
% Limited a lot	9.2	7.6	9.6
% Limited a little	10.5	10.2	10.1
% Not limited	80.3	82.3	80.4

- As shown in table 23 above, the long-term health or disability profile for Fochabers has proportionally slightly more people either limited a little or a lot, than Moray but a similar proportion to Scotland. Fochabers has a higher proportion of older people than Moray which may be a contributory factor.
- Fochabers (80.3%) has a lower proportion (2% less) of people who consider themselves not limited by a Long-term health or disability as compared to Moray (82.3%).

---

<sup>25</sup> 2011 census

<sup>26</sup> 2011 census



**Table 23 Long Term health Conditions**<sup>27</sup>

Long-term health condition	Fochabers	Moray	Scotland
All people	1,728	93,295	5,295,403
% With no condition	67.2	70.9	70.1
% With one or more long-term health conditions	32.8	29.1	29.9
% With deafness or partial hearing loss	7.7	7.0	6.6
% With blindness or partial sight loss	2.8	2.5	2.4
% With learning disability (for example, Down's Syndrome)	1.0	0.5	0.5
% With learning difficulty (for example, dyslexia)	1.9	2.0	2.0
% With developmental disorder (for example, Autistic Spectrum Disorder, Asperger's Syndrome)	0.7	0.6	0.6
% With physical disability	6.8	5.8	6.7
% With mental health condition	3.1	3.2	4.4
% With other condition	21.4	18.2	18.7

- The proportion of the Fochabers population (32.8%) who have one or more long-term health conditions is higher than both the Moray (29.1%) and Scotland (29.9%) averages.
- The prevalence profile of long-term health conditions shows that Fochabers has a higher incidence rate in the majority of conditions. When compared to Moray, the Fochabers rate is notably higher for deafness or partial hearing loss, physical disability and other conditions.
- In Fochabers the most common defined condition was deafness or partial hearing loss (7.7%), followed by physical disability (6.8%) and mental health condition (3.1%).
- Over a fifth (21.4%) of residents were classed as having some other form of condition, above the Moray (18.2%) and Scotland (18.7%) rates.

---

<sup>27</sup> 2011 census

---

**Table 24 Health Condition Prevalence rates by GP Practice**<sup>28</sup>

Health Condition Prevalence Rates (per 100 patients)	Fochabers	Moray	Scotland
1. "Smoking" (conditions assessed for smoking)	32.3	25.5	24.7
2. Hypertension	20.6	14.8	13.9
3. Obesity	14.1	10.5	8.1
4. Asthma	7.7	5.9	6.1
5. Hypothyroidism	6.8	5.4	3.8

The table above shows the 5 most common health conditions recorded at the Fochabers Medical Practice during March 2013 to April 2014 through the NHS Quality & Outcomes Framework data collection. The number of people, as of 1<sup>st</sup> January 2013, registered with the practice was 4,047. For comparison the Moray and Scotland rates have been included in the table.

- The top four health conditions reported at the practice are the same as Moray and Scotland. For all of these conditions the prevalence rates at the Fochabers Medical Practice are higher than both Moray and Scotland.
- Data from the Fochabers practice shows markedly higher rates (per 100 patients) for the five conditions listed above when compared to Scotland – Smoking conditions (+7.6), Hypertension (+6.7), Obesity (+6), Asthma (+1.6) and Hypothyroidism (+3).
- The Fochabers practice actually has a higher rate than nationally and against Moray for each of the top ten health conditions in Fochabers as listed in the NHS data.
- Fochabers practice has lower rates of kidney disease, depression, learning disabilities, osteoporosis and palliative care than both Moray and Scotland.

Of the 24 health conditions recorded at GP Practices through the NHS Quality & Outcomes Framework the Fochabers Medical Practice prevalence rate was higher than the national average for 17 of the 24 conditions. In summary, as with the national picture Smoking conditions, Hypertension and Obesity are the top three most common health conditions at the Fochabers practice, however the rates are markedly higher at Fochabers when compared to the national average.

---

<sup>28</sup>Elgin is served by three GP Practices (Elgin Community, Linkwood, and Maryhill). The data shown is the weighted average of all three practices using the list sizes of each practice. The source data is from <http://www.isdscotland.org/Health-Topics/General-Practice/Quality-And-Outcomes-Framework/2013-14/Register-and-prevalence-data.asp>

---

## 6.1.1 Maternity

**Table 25 Teenage Pregnancies** <sup>29</sup>

Teenage Pregnancies (Rate per 1000 women)	Moray	Scotland
Teenage pregnancies aged under 16 <sup>30</sup> : 2012-2014	3.0	4.9
Teenage pregnancies aged under 18 <sup>31</sup> : 2012-2014	21.2	24.9
Teenage pregnancies aged under 20 <sup>32</sup> 2014	32.9	34.1

- There are relatively fewer teenage pregnancies in Moray than for the rest of Scotland. Rates are reducing in Moray and across Scotland. The three year aggregate data for 2003-2005 for the under 16s indicated that there were 32 teenage pregnancies in Moray, however by 2012-2014 the number recorded had reduced to 15, more than halving the rate. Whilst the Scotland rate has also reduced over the same period it has not done so to the same extent.
- Under 20s rates in Moray are closer to Scotland rates than the other two categories and in this category the Scotland rate has reduced more than Moray's has. In 2005 there were 120 teenage pregnancies in Moray for under 20's; by 2014 the figure had reduced to 91.
- Data for Fochabers teenage pregnancies is not freely available. However between 2009 and 2011 there was 1 birth to a first-time-mother where the mother was under twenty and living in Fochabers. Over the same period in Moray there were 190 births to first time mothers under the age of 20.
- Smoking during pregnancy: Accumulated figures between 2011 and 2013 show that the percentage of pregnant women who smoke at booking is slightly higher in Moray (20.8%) than it is in Scotland (19.1%) but is trending downwards. The Fochabers rate is lower at 15.2%.

---

<sup>29</sup> Source – Scottish Neighbourhood Statistics - <http://www.sns.gov.uk>

<sup>30</sup> Rate calculated using 3yr aggregate data, 2012-14, 13-15 age group

<sup>31</sup> Rate calculated using 3yr aggregate data, 2012-14, 15-17 age group

<sup>32</sup> Rate calculated using 1Yr data, 15-19 age group

---

## 6.2 Social Care

**Table 26 Provision of Unpaid Care** <sup>33</sup>

Provision of unpaid care	Fochabers	Moray	Scotland
All people	1,728	93,295	5,295,403
% Not providing care	90.4	91.6	90.7
% Providing 1 to 19 hours of care a week	6.1	4.8	5.2
% Providing 20 to 34 hours of care a week	0.5	0.7	0.9
% Providing 35 to 49 hours of care a week	0.6	0.6	0.8
% Providing 50 or more hours of care a week	2.4	2.2	2.5

- Fochabers has a lower rate of residents who do not provide unpaid care (90.4%) compared to Moray (91.6%). In total 166 (9.6%) of Fochabers residents do provide care to either a friend or family member, a similar proportion to Garmouth (9.5%) and Cullen (9.7%).
- Almost two thirds (63.5%) of those who do carry out unpaid care in Fochabers provide between one and 19 hours of care a week.
- Fochabers has a much higher rate of unpaid carers who are aged over 65 (27.1%), as well as a low rate of carers who are in employment (44.6%). This compares with the Moray averages of 21.2% and 52.9% respectively.

---

<sup>33</sup> 2011 census

---

### 6.3 Hospital Emergency Admissions

Table 27 Emergency Admissions <sup>34</sup>

	Fochabers	Moray	Scotland
Emergency admissions - both sexes - all ages - rate/100,000 : 2012	10,455	7,476	10,194
Emergency admissions - both sexes - aged 65 and over - rate/100,000 : 2012	21,984	16,945	25,493

- Emergency Admissions rates for Fochabers are well above the rest of Moray, with the rate for 'all ages' 40% above that for Moray and the '65 and over' rate 30% above.
- The 'all ages' emergency admissions rate is more in line with the national picture, while the '65 and over' rate is below the national rate.
- The high rates in comparison to Moray may be linked to both the high health condition prevalence rates and the older population demographic, particularly the higher proportion of the population aged 75 and over.
- When compared to neighbouring Mosstodloch, Fochabers is also well above in both rates of admission – twice the rate for 'all ages' and a third higher for '65 and over'.

---

<sup>34</sup> 2011 census

---

## 7 Antisocial Behaviour

---

**Table 28 Number of Antisocial Behaviour Complaints per 1,000 population (2012-14)** <sup>35</sup>

Type of Complaint	Fochabers	Moray
Noise	12.2	12.2
Rowdy Behaviour	0.0	4.0
Neighbour Dispute	1.4	3.9
Graffiti	0.0	0.3
Vandalism	6.1	8.1
Litter	0.3	1.7
Fly Tipping	0.0	3.5
Dog Fouling	1.7	1.3

- The level of anti-social behaviour (ASB) in Fochabers (per 1,000 residents) compared to Moray is generally lower, with the exception of noise and dog fouling complaints.
- Noise complaints are the most common ASB issue reported at a rate of 12.2 per 1,000 residents, this in line with the Moray average. Vandalism, with a rate of 6.1 is (like Moray (8.1)), the second highest reported complaint.
- Dog fouling complaints are relatively low with a rate of 1.7, although this is higher than the Moray rate (1.3).

**Table 29 Crime Rates** <sup>36</sup>

Number of Crimes per 1,000 residents per year		
Year	Fochabers	Moray
2012/13	46.9	67.5
2013/14	40.5	69.4

- Moray police crime file data shows that Fochabers has a lower crime rate per 1,000 residents compared to the overall Moray rate.
- Over the two years presented in the table above the rate fell by 6.4 to 40.5 per 1,000 in 2013/14, compared to a slight increase for Moray to 69.4 per 1,000.
- Over the two years reported the crime rate for Fochabers has been lower than that of neighbouring Mosstodloch, where the rate for 2013/14 was higher at 57.2 per 1,000 residents.

---

<sup>35</sup> Average number of complaints per year over the two years 2012/13 and 2013/14 – from police records

<sup>36</sup> From police records of reported crimes

---

## 8 Access to Service

---

### 8.1 Drive time to (2012 data)

**Table 30 Drive Time**<sup>37</sup>

Name	GP	Post Office	Petrol Station	Primary School	Secondary School	Shopping Facilities
Fochabers South	2.8	2.3	5.6	4.1	2.4	13.6
Fochabers North	2.4	1.6	4.4	3.4	1.4	13.3

- There are 2 data zones<sup>38</sup> which together make up the Fochabers area. The average drive times are largely similar for the two datazone areas.
- The majority of essential services are less than 5 minutes' drive time away, with the exception of accessing shopping facilities which take around 14 minutes to get to.

### 8.2 Public transport to (2012 data)

**Table 31 Public Transport time to**<sup>39</sup>

Datazone	GP	Post Office	Shopping Facilities
Fochabers South	6.1	6.6	32.0
Fochabers North	7.3	4.2	30.0

- The above table provides estimated journey times (minutes) by public transport to essential services for those residing in Fochabers.
- Unsurprisingly public transport times are longer than drive times; however travel times to the GP and Post Office are less than 8 minutes, although travel times for shopping facilities are around 30 minutes.

---

<sup>37</sup> Source – Scottish Neighbourhood Statistics - <http://www.sns.gov.uk>

<sup>38</sup> The Scottish Index of Multiple Deprivation (SIMD) divides Scotland into 6,505 small areas, called data zones, each containing around 350 households.

<sup>39</sup> Source – Scottish Neighbourhood Statistics - <http://www.sns.gov.uk>

## 9 Summary

**Table 32 SIMD 2012 quintile ranking<sup>40</sup> for the data zones which cover the Fochabers area**

Name	Income	Housing	Health	Employment	Education/ Skills/Training	Crime	Access to Services	Overall
Fochabers South	3	4	4	3	3	4	2	3
Fochabers North	4	4	3	4	4	2	4	4

1. At the time of the 2011 census, Fochabers accounted for 1.9% of Moray's overall population. Like Moray, Fochabers's population has grown since the 2001 census; although the Fochabers's population grew by 15.3% which was over twice the rate of Moray at 7.3%.
2. Fochabers has an older population demographic, with the average ages for male being 43 and females 48, two and five years higher than the Moray averages respectively. Fochabers has a larger proportion of residents aged 60 and over (30.1%) compared to Moray (26.9%) and Scotland (23.2%); with a significant increase recorded in the 60-74 year olds since 2001.
3. There is a higher rate of the population who are widowed / surviving partners in Fochabers (10.2%), as well as a high rate of households where all residents are aged 65 or over (29%).
4. The majority of the Fochabers population are white-Scottish (84.8%), with a subsequent smaller proportion of non-British.
5. Fochabers has a relatively high proportion of Church of Scotland followers compared to Moray, although there is also a large percentage declaring no religious belief. Similar to Moray, Fochabers has a much smaller proportion of Roman Catholic followers than nationwide.
6. Fochabers has a higher proportion of council housing and other social rented accommodation (24.3%) compared to Moray (19.3%); in contrast there is a lower rate of private rents available (9%). Similar to Moray the majority of households in Fochabers are houses or bungalows (91.6%), compared to a national average of 63.4%.

<sup>40</sup> The Scottish Index of Multiple Deprivation (SIMD) divides Scotland into 6,505 small areas, called data zones, each containing around 350 households. An average ranking is calculated by using a population weighted average of SIMD scores of all 29 data zones. The SIMD score for each data zone is between 1 and 6,505. In quintiles, the rankings are 1 (most deprived) to 5 (least deprived)



- 
7. Home ownership in Fochabers (65.4%) is in line with Moray (65.9%) and above the Scottish average (62.0%).
  8. The level of car ownership is largely in line with the Moray average with around 80% of households having access to a least one car or van, well above the national rate (70%).
  9. Car is by far the most common mode of transport to work (70.4%), well above Moray (63.7%) and Scotland (62.5%). While there is a slightly higher percentage travelling to work by bus (4%) compared to Moray, this is surprisingly low when given the relatively good bus links with the village lying on the main A96 stagecoach route between Inverness and Aberdeen.
  10. Fochabers (67.5%) has a relatively lower rate of residents who are economically active when compared with Moray (71.5%), although this is generally in line with neighbouring Mosstodloch (68.4%) and Garmouth (67.3%). The higher economically inactive rate is largely explained by the greater proportion of retired residents; with Fochabers (19.5%) well above Moray (16.3%).
  11. The main industries Fochabers residents are employed in are wholesale and retail; repair of motor vehicles and motorcycles (16%), Human health and social work activities (14.7%), Education (12.5%) and Manufacturing (11.1%). The proportion of employment by industry is similar to the Moray profile, with the most notable differences in Education (Fochabers 12.5% & Moray 7.9%) and Human health and social work activities (14.7% & 12.7% respectively).
  12. Fochabers has a relatively higher proportion of employed residents working in professional occupations (15.5%), compared to Moray (11.4%) and neighbouring Mosstodloch (8.5%). In contrast, Fochabers (13.2%) also has a high proportion employed in 'low paid' elementary occupations, slightly above the Moray average (12.8%) although below both Mosstodloch (15.1%) and Lhanbryde (15.6%).
  13. Educational attainment levels at the S4 stage are largely in line with the Moray average and slightly above the national rate. At the S5 stage Fochabers attainment is considerably higher than the Moray and Scotland averages, with proportionately more achieving 1, 3 and 5 awards at Level 6 or above. The average tariff score at S5 stage in Fochabers (417) is also well above the average tariff score for Moray (365) and Scotland (347).

- 
14. Fochabers has one of the highest rates of people travelling to their place of study on foot with 57.8% doing so. This is rather unsurprising given Fochabers has both a primary and secondary school in the village.
  15. Fochabers has one of the highest rates in Moray of school leavers entering Further Education (36.2%), well above Mosstodloch (23.7%), Moray (27.2%) and Scotland (27.1%). Far fewer leavers enter employment (19.1%) compared against a Moray average of 28.7%, with the figure more in line with the national average (19.7%). However, Fochabers also has a high percentage of pupils unemployed (11.4%) when they leave school, above both the Moray (9.1%) and Scotland (10.9%) average.
  16. Self-reported health data in the 2011 census shows that a small proportion of Fochabers residents see themselves as in 'very good' health compared to Moray and Scotland, only a small percentage say their health is 'bad' or 'very bad' at 4%. A higher rate of residents have been diagnosed with at least one long term health condition, this is more than likely linked to the older age demographic of the village.
  17. Smoking conditions, Hypertension, and Obesity are the three most common health conditions diagnosed at the Fochabers Medical practice, and are the most commonly diagnosed in Moray and Scotland. However, the incidence rates for these conditions are markedly higher at the Fochabers Medical practice when compared to both the Moray and national averages. Of the 24 health conditions recorded against through the NHS Quality & Outcomes Framework, Fochabers Medical practice has a higher incidence rate in 17 of the conditions.
  18. Fochabers has an older demographic, a higher proportion of households where all occupants are aged 65 or over, and also a higher proportion of residents providing unpaid social care.
  19. Emergency admission rates are high in Fochabers, with the rate for all ages the highest in Moray at 10,455 per 100,000 population. Emergency admission rates for those aged 65 and over are also one of the highest in Moray at 21,984 per 100,000.
  20. The rate of anti-social behaviour (ASB) and crime in Fochabers compared to Moray is proportionately lower, with the only real exception being higher rates of ASB complaints regarding dog fouling and a similarly high rate of domestic noise.

---

21. SIMD data for the 2 datazones covering the Fochabers area shows that as a whole there are few areas of deprivation. The majority of SIMD domains are categorised in quintiles 3 and 4, with two exceptions for Crime (Fochabers North) and Access to Services (Fochabers South) which are both ranked in quintile 2.

**Performance Management Officer**

Corporate Policy Unit

Moray Council

**Tel: 01343 543451**



**Moray  
Community Planning  
Partnership**