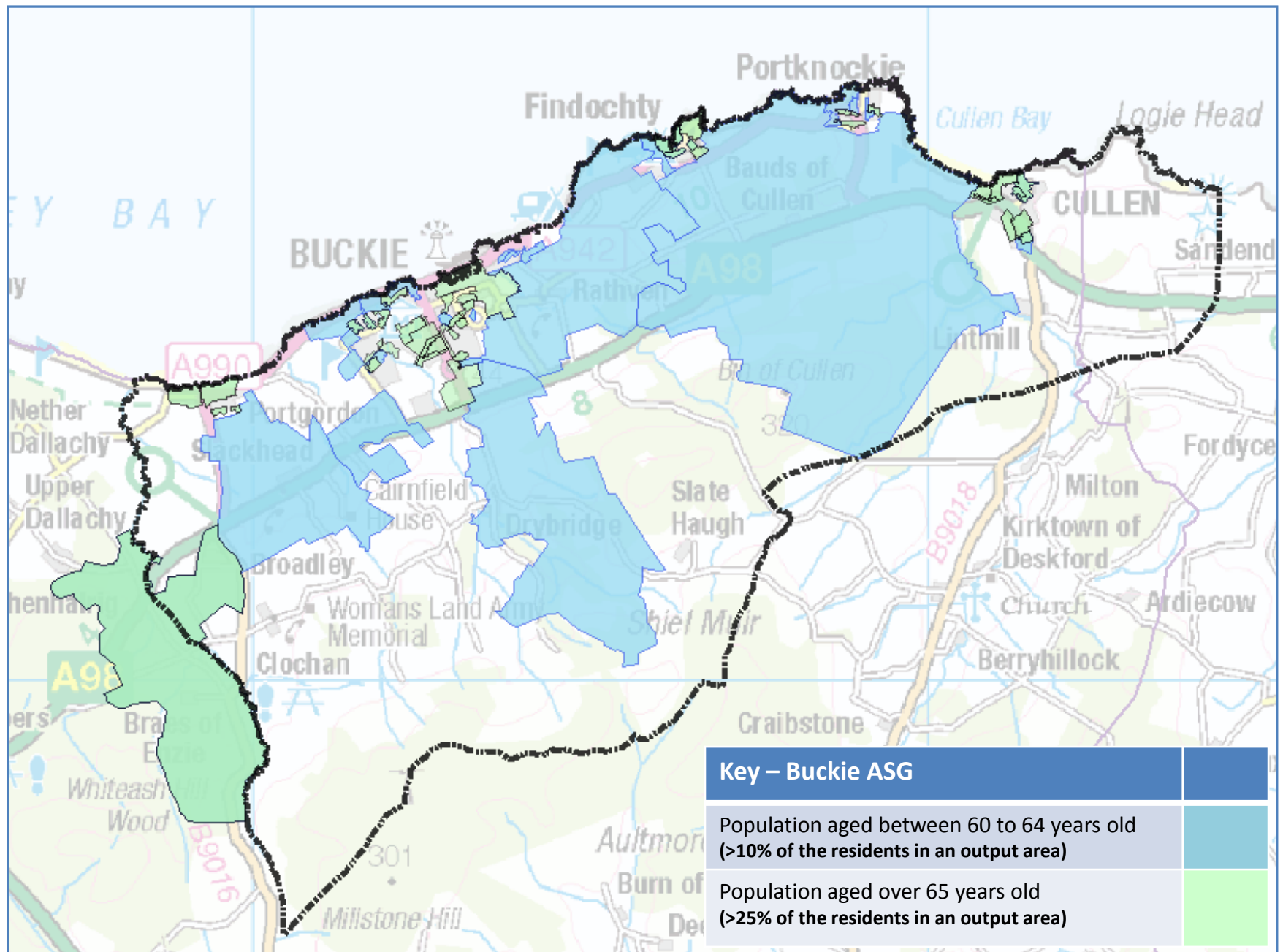
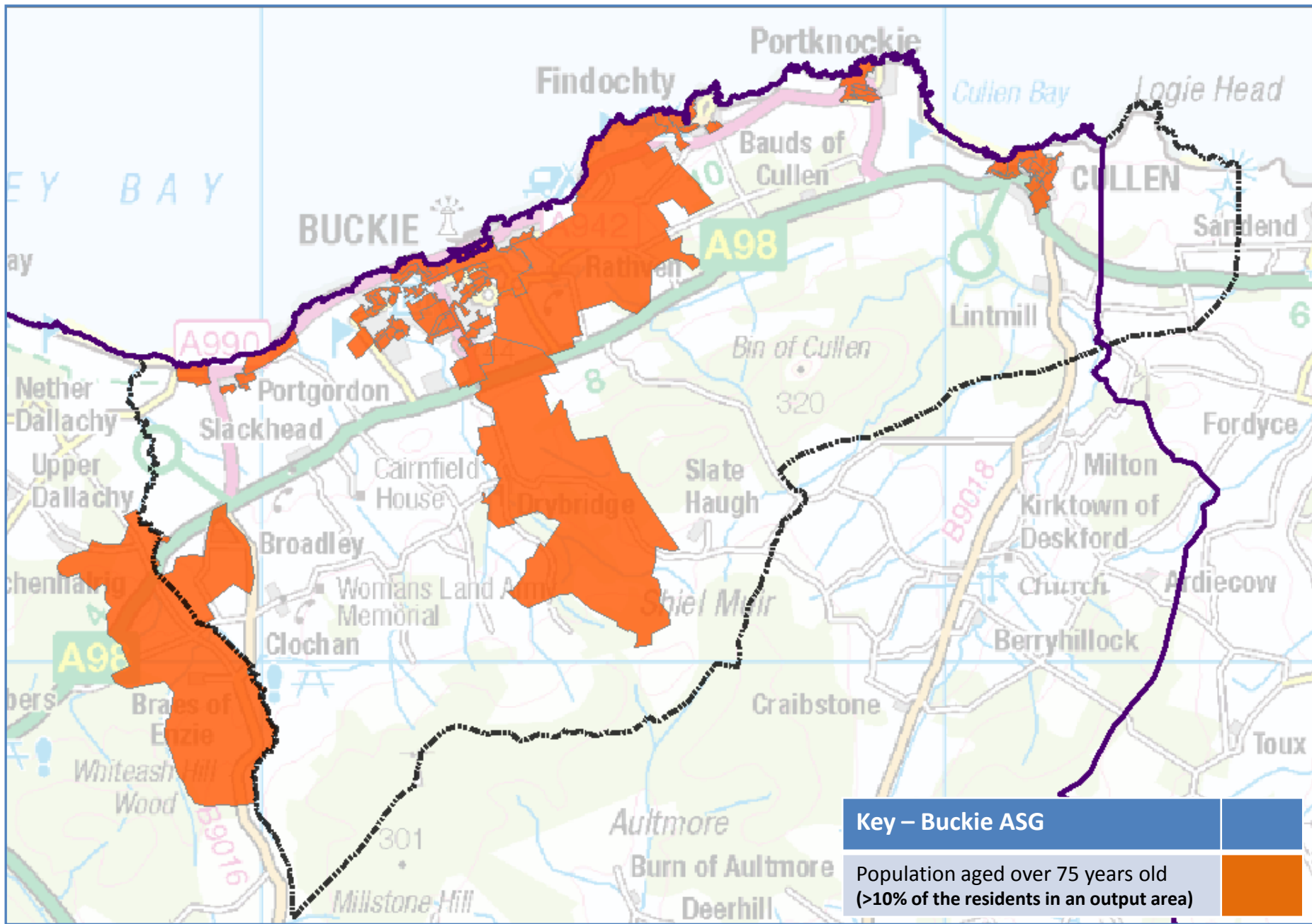


# Buckie ASG

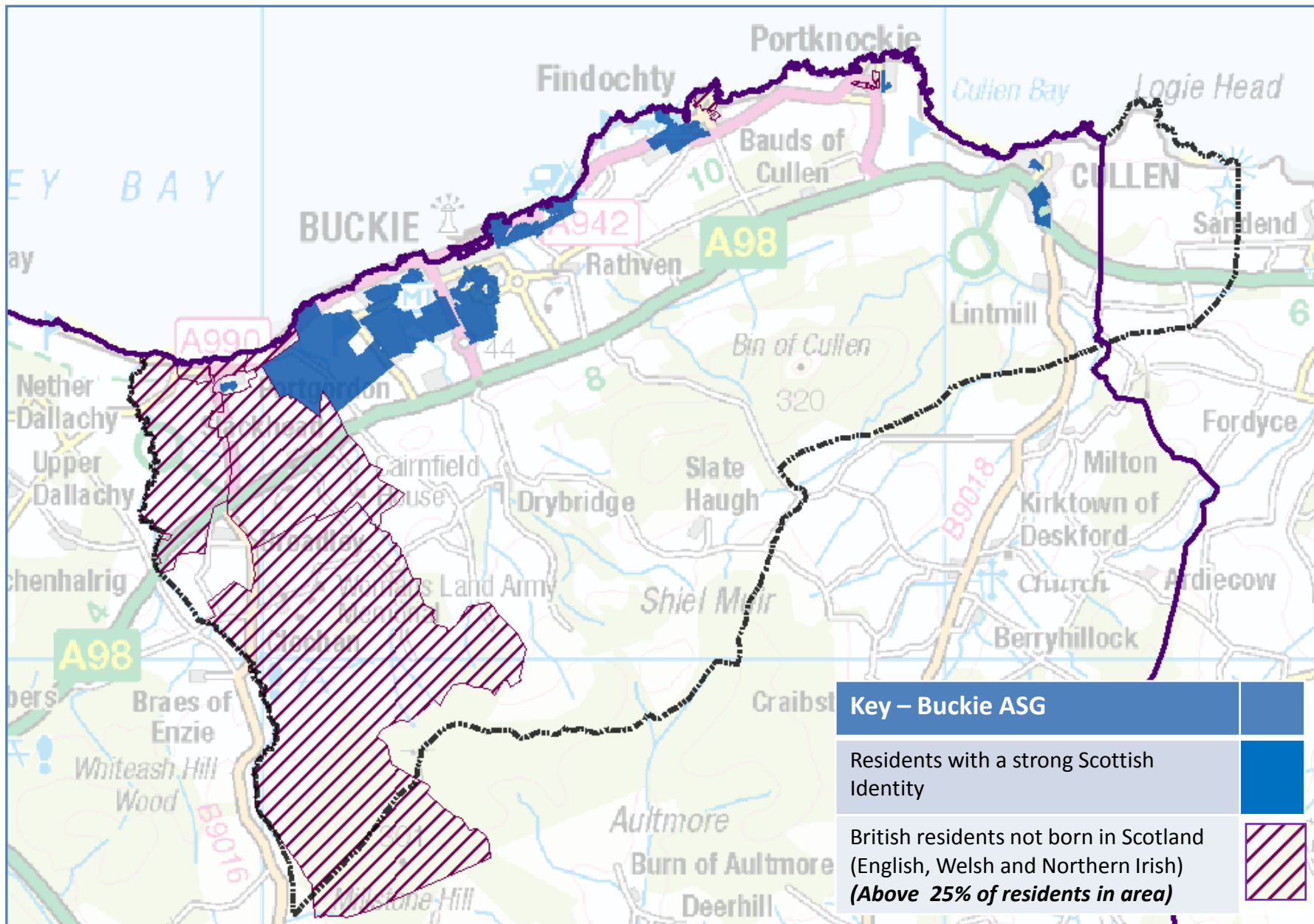
## Maps for Summary

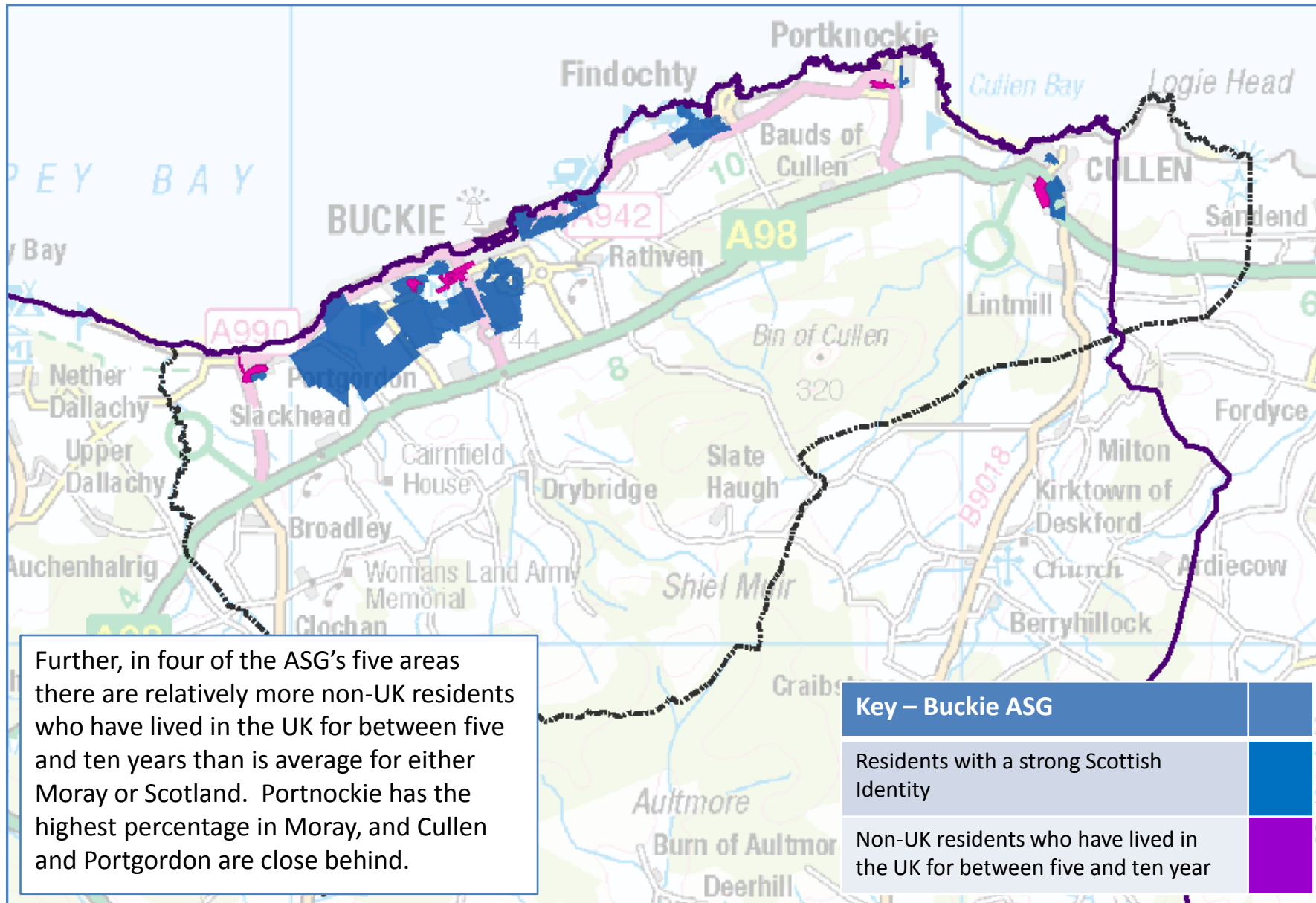
# **BUCKIE – POPULATION AGE**





# BUCKIE – IDENTITY

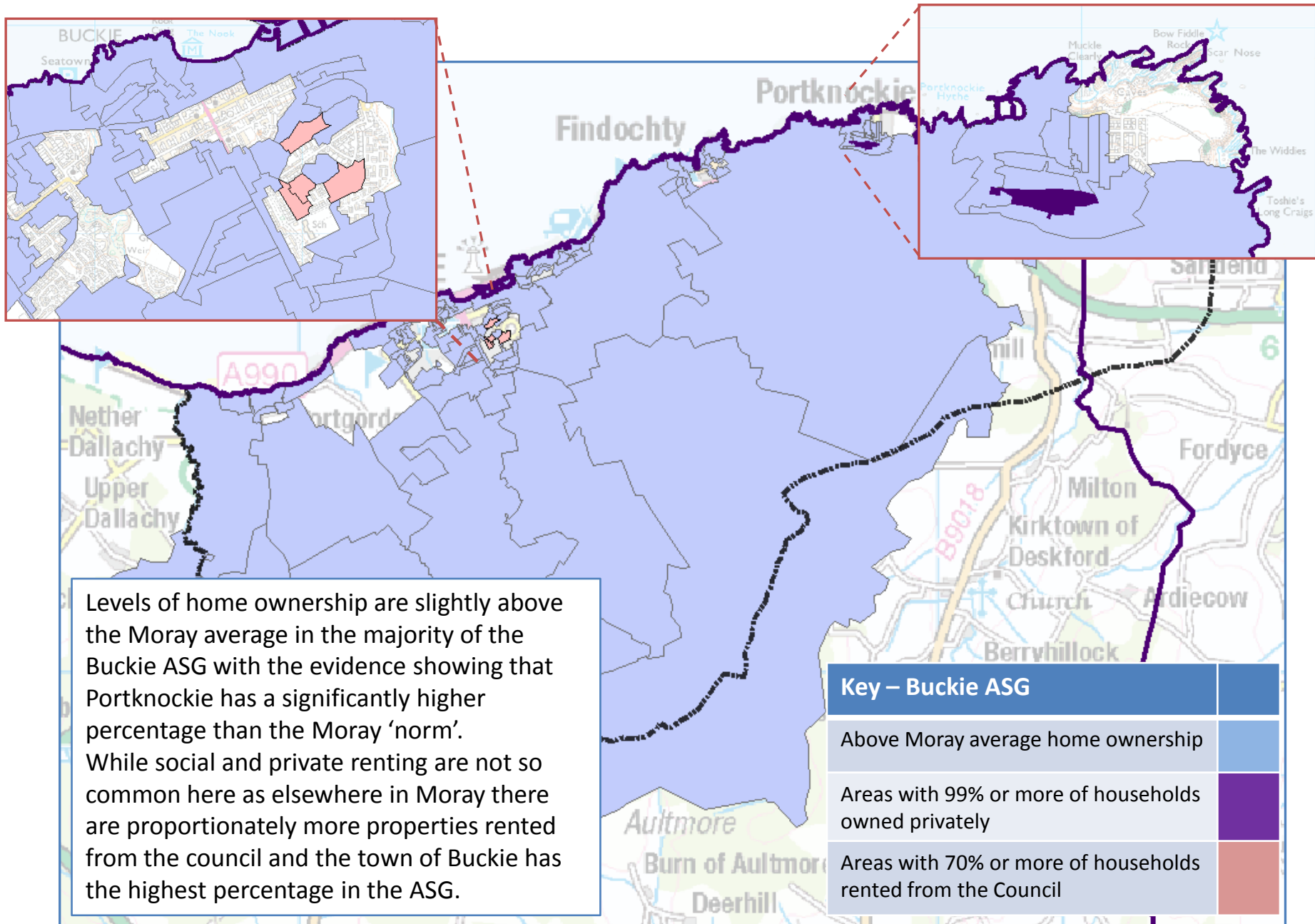


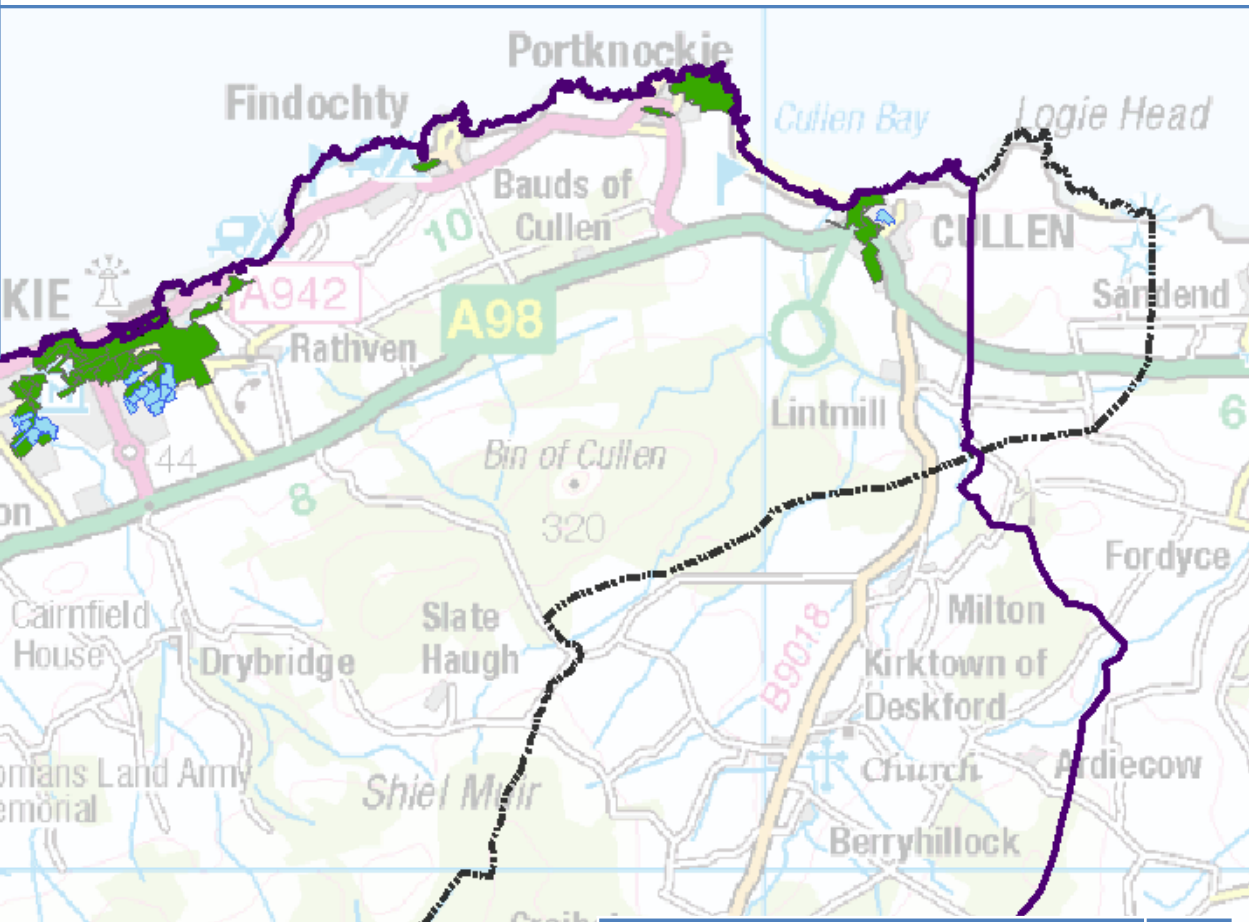
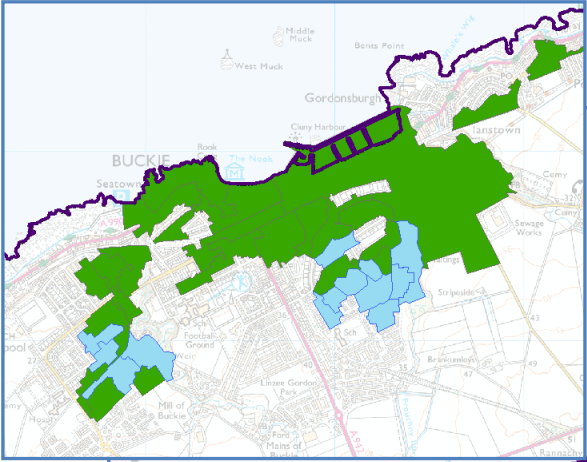


Further, in four of the ASG's five areas there are relatively more non-UK residents who have lived in the UK for between five and ten years than is average for either Moray or Scotland. Portknockie has the highest percentage in Moray, and Cullen and Portgordon are close behind.

# BUCKIE – HOUSING



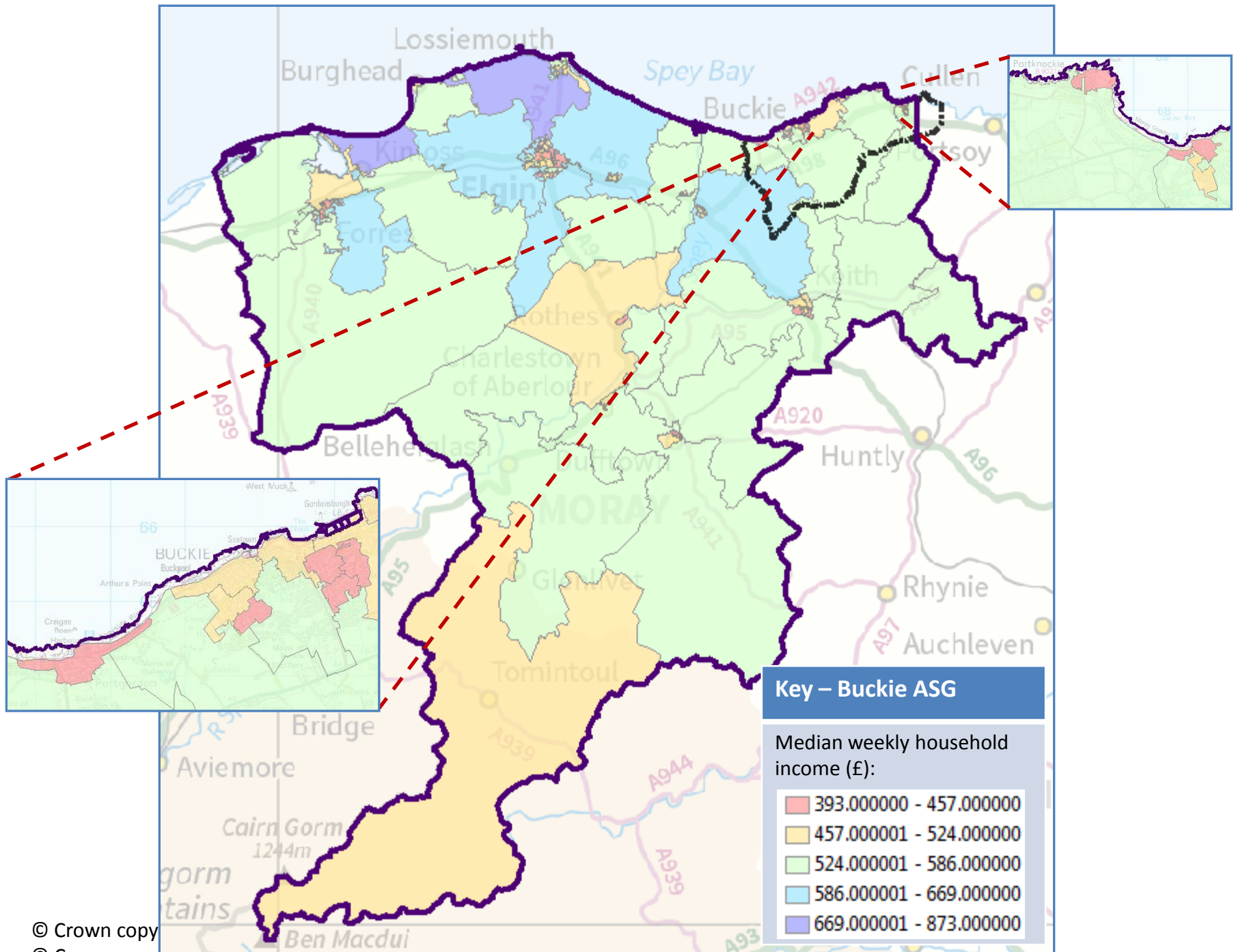


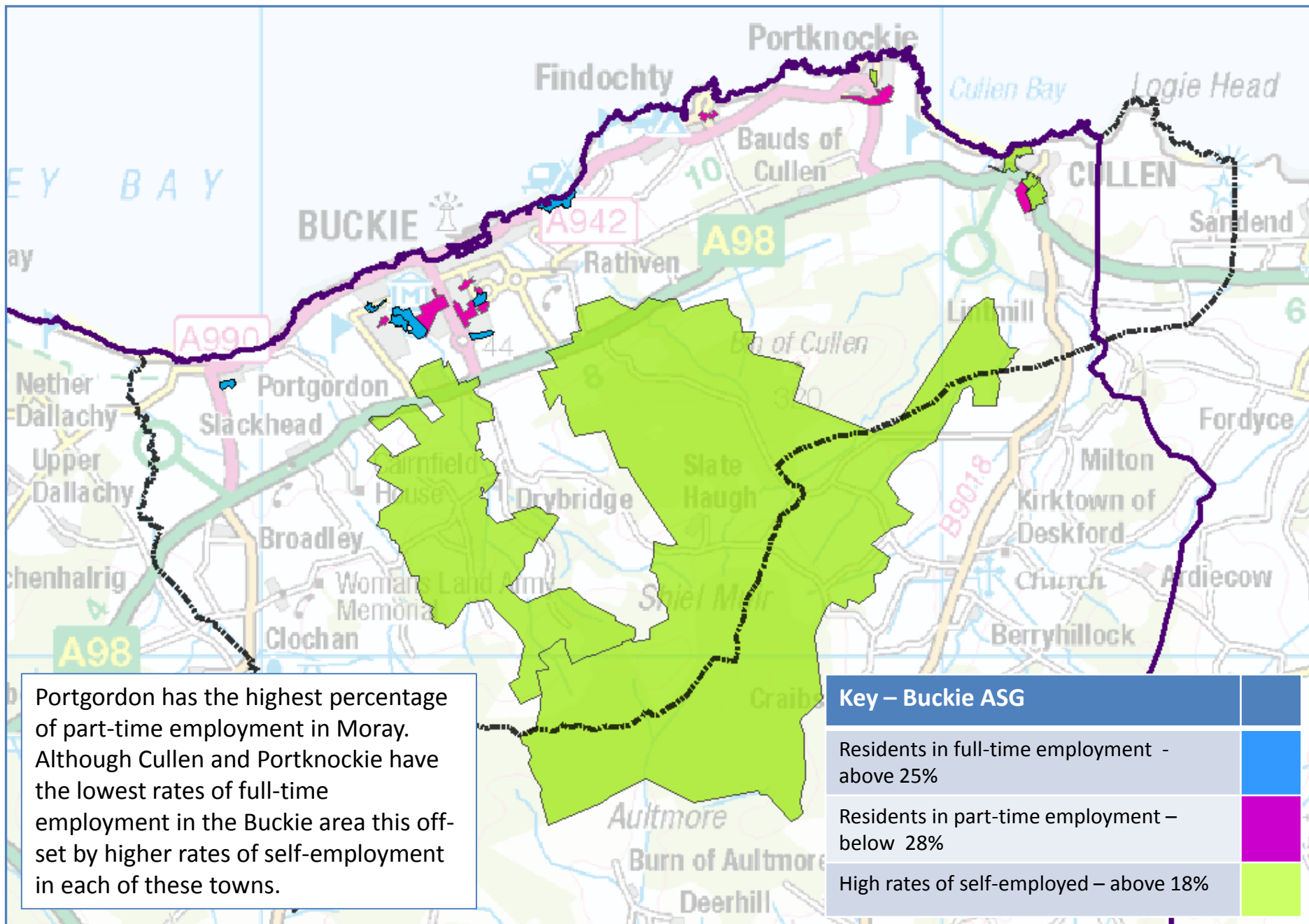


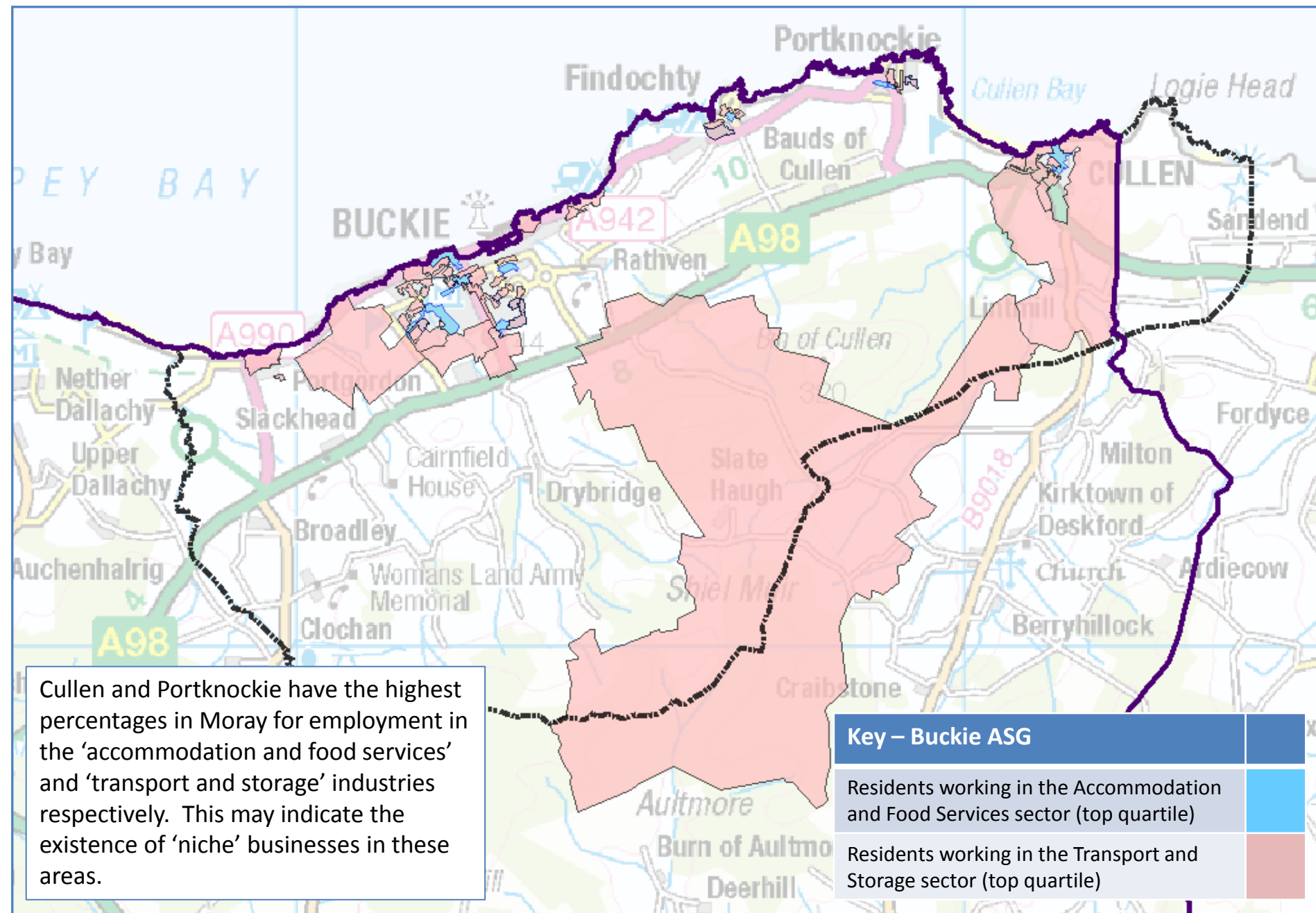
In fact, the town of Buckie has the highest percentage of households in Moray with no car or van and also the lowest percentage with two cars or vans. Vehicle ownership elsewhere in the area is roughly in line with the Moray average.

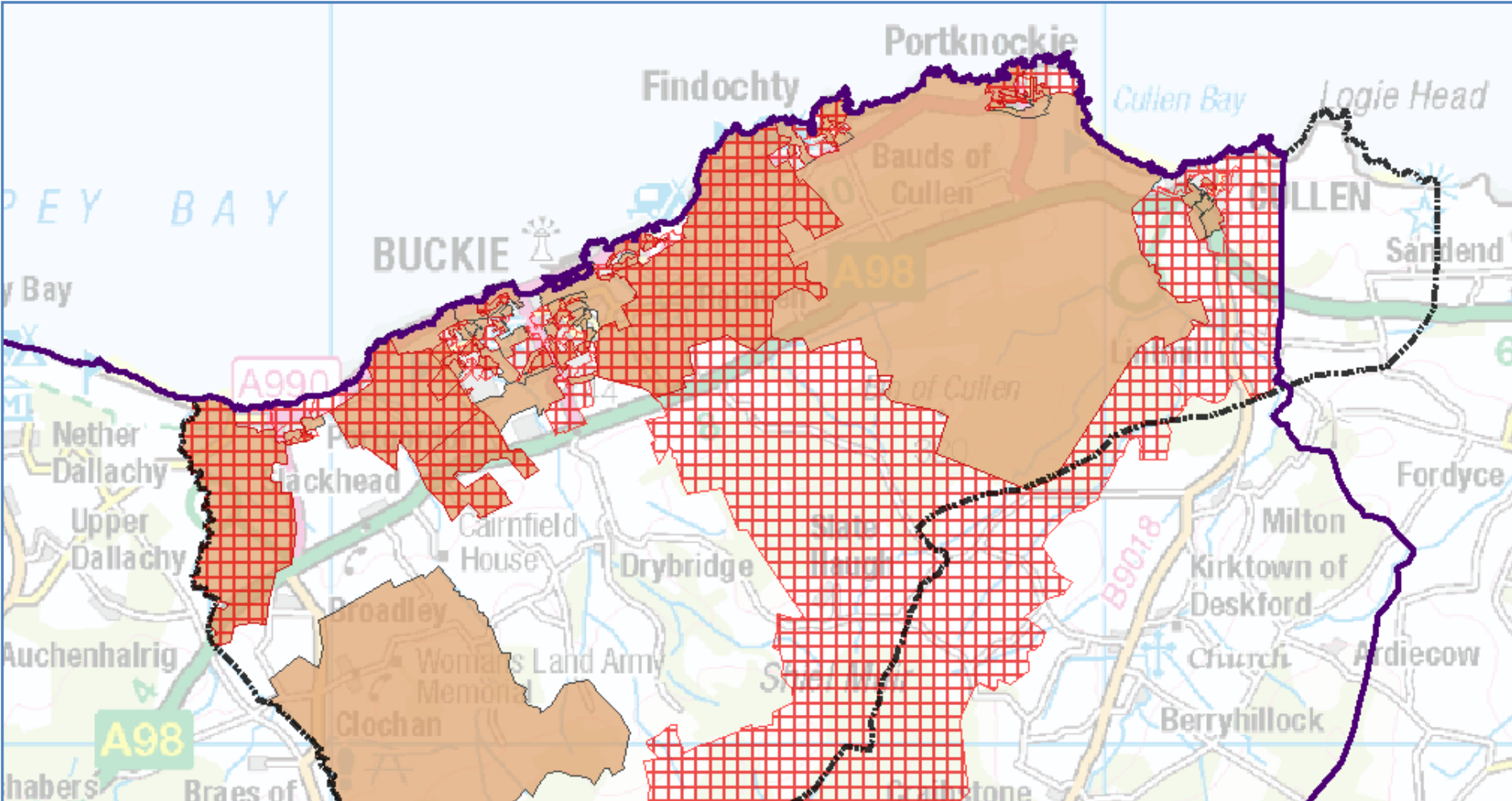
Key – Buckie ASG	
Above Moray average number of households with no car or van	
Low rate of ownership of two cars or vans (below 10% of households)	

# **BUCKIE – ECONOMY AND LABOUR**





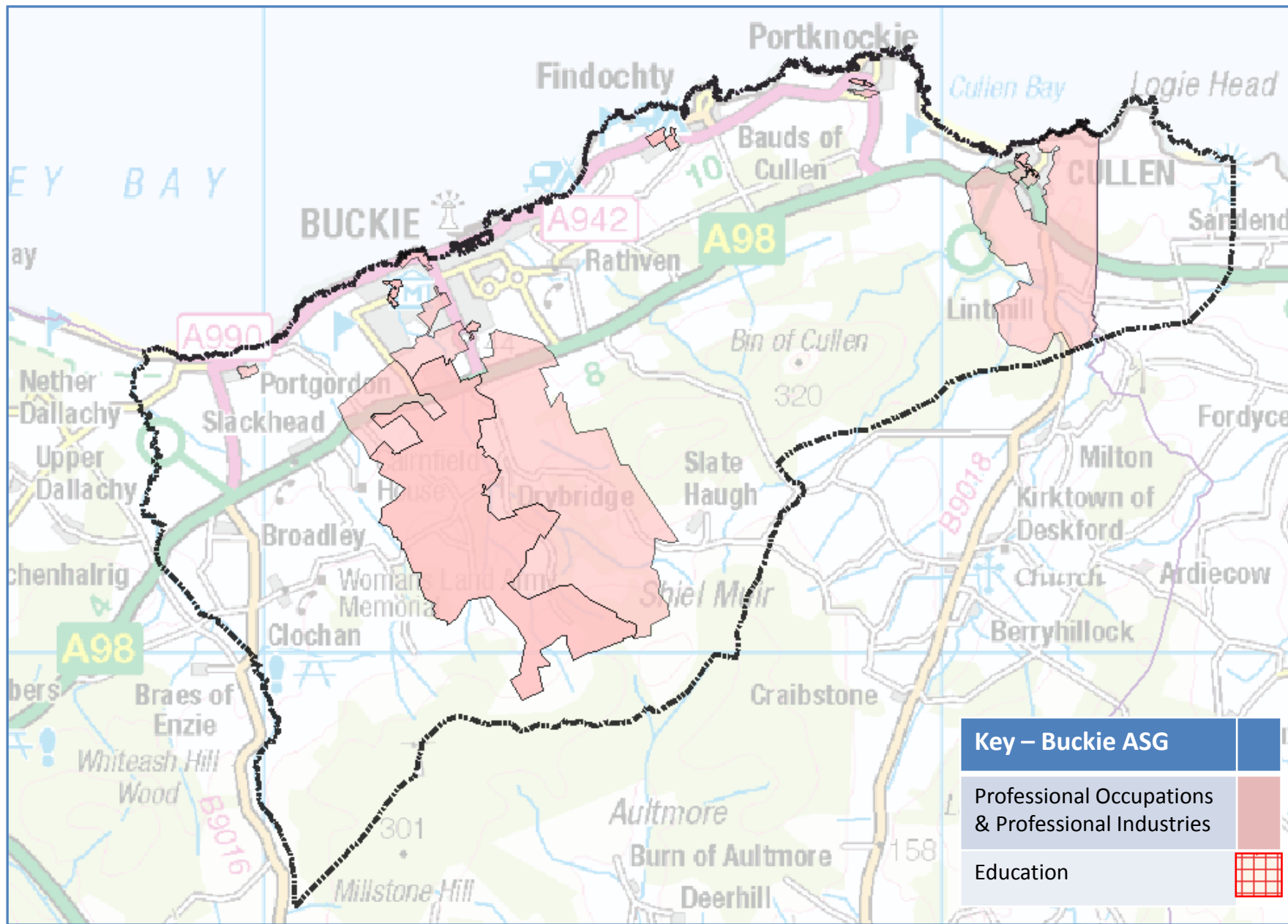




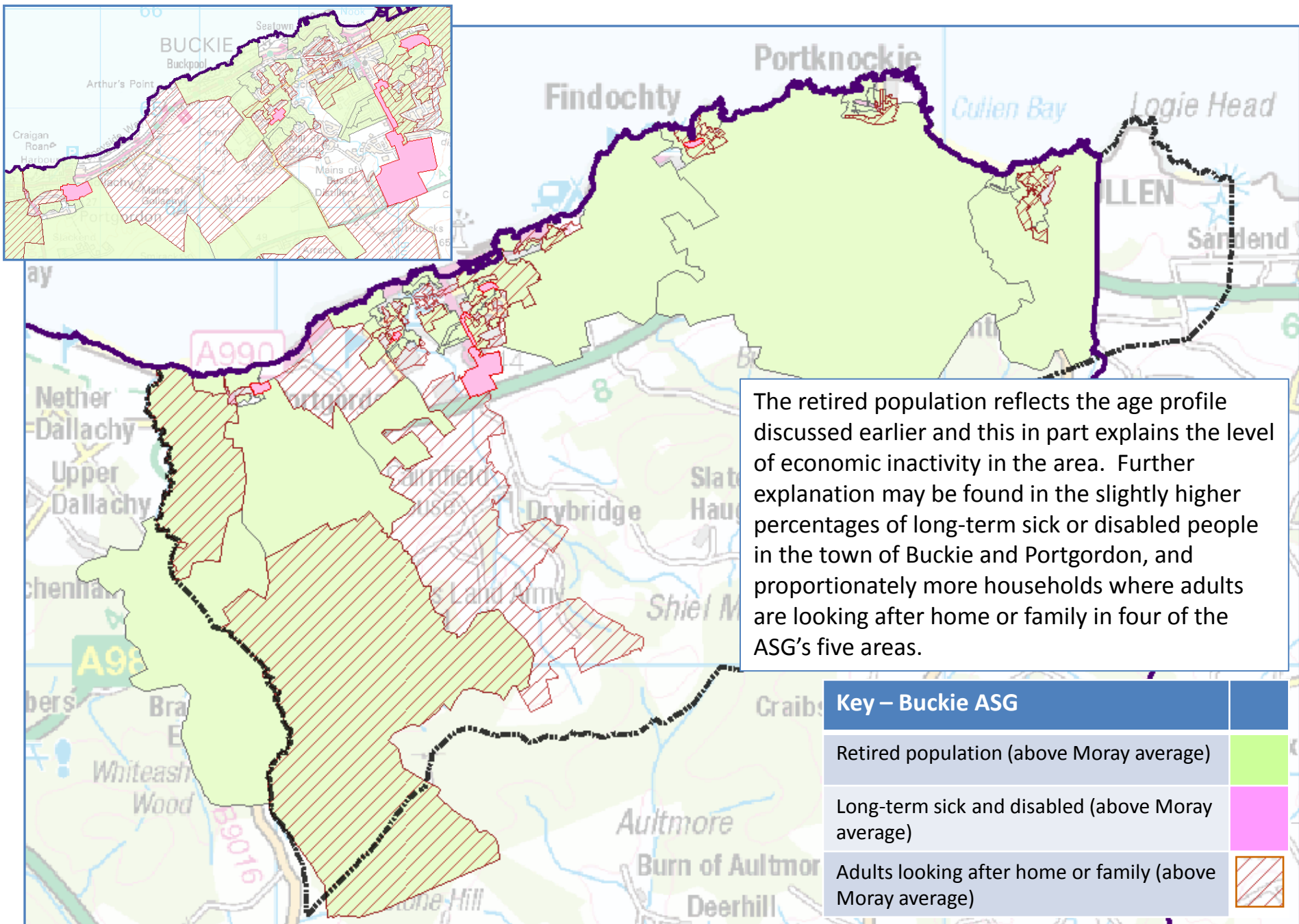


The top employment industry is 'wholesale and retail trade; repair of motor vehicles and motorcycles'.  
 Second to the wholesale and retail trade is the human health and social work industry.

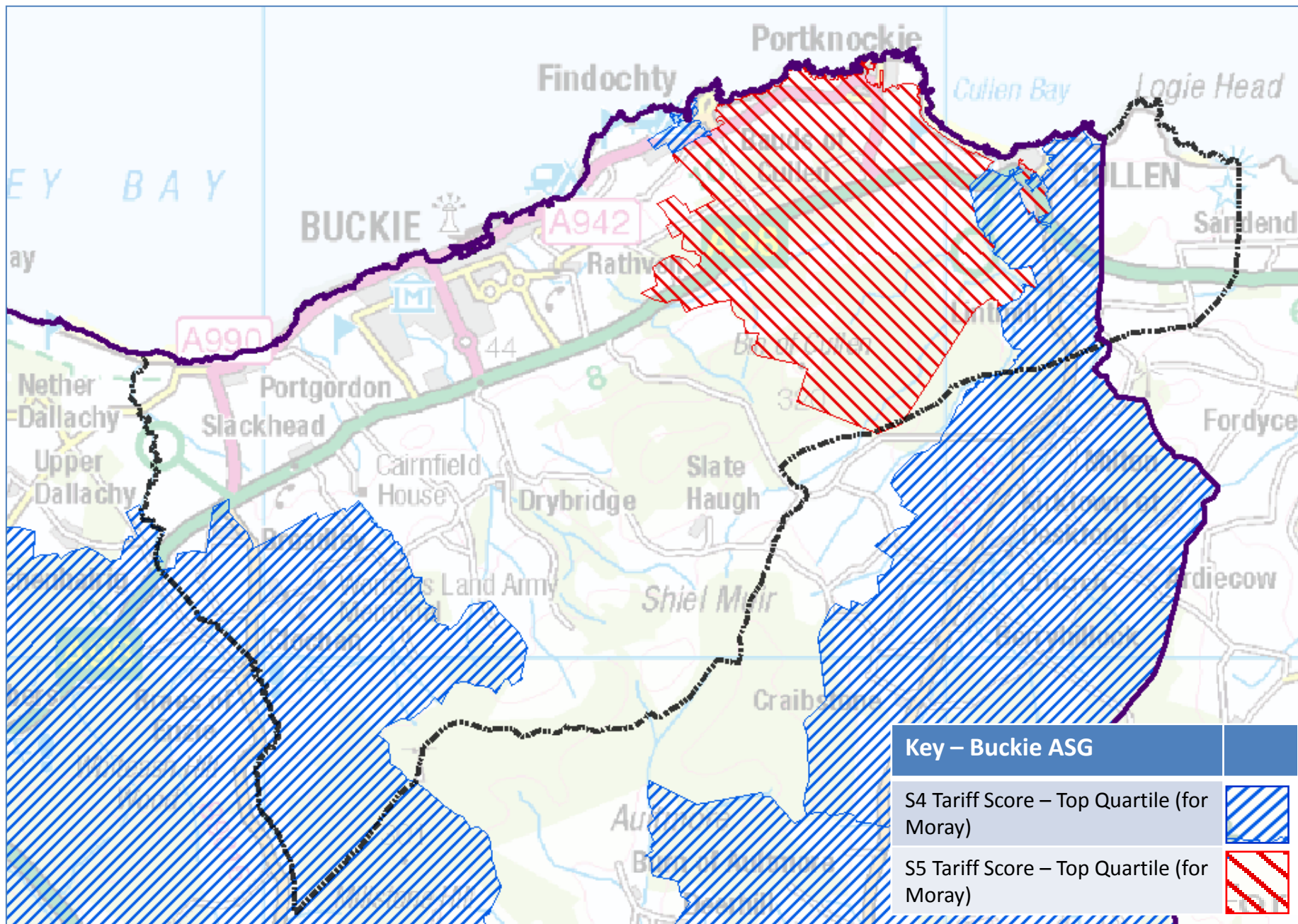
Key – Buckie ASG	
Residents working in the Wholesale and Retail sector (above Moray average)	
Residents working in the Human Health and Social Work sector (above Moray average)	

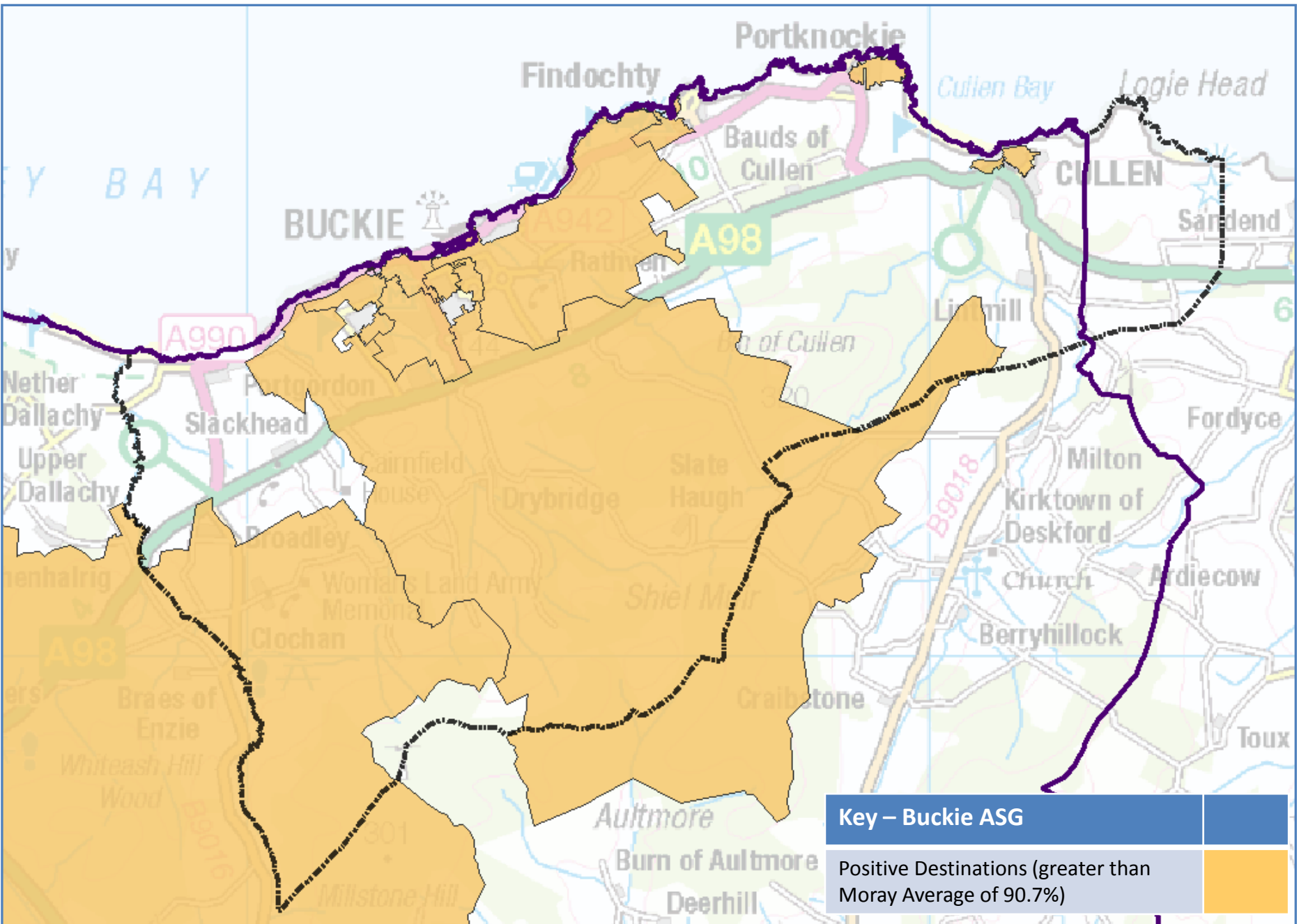




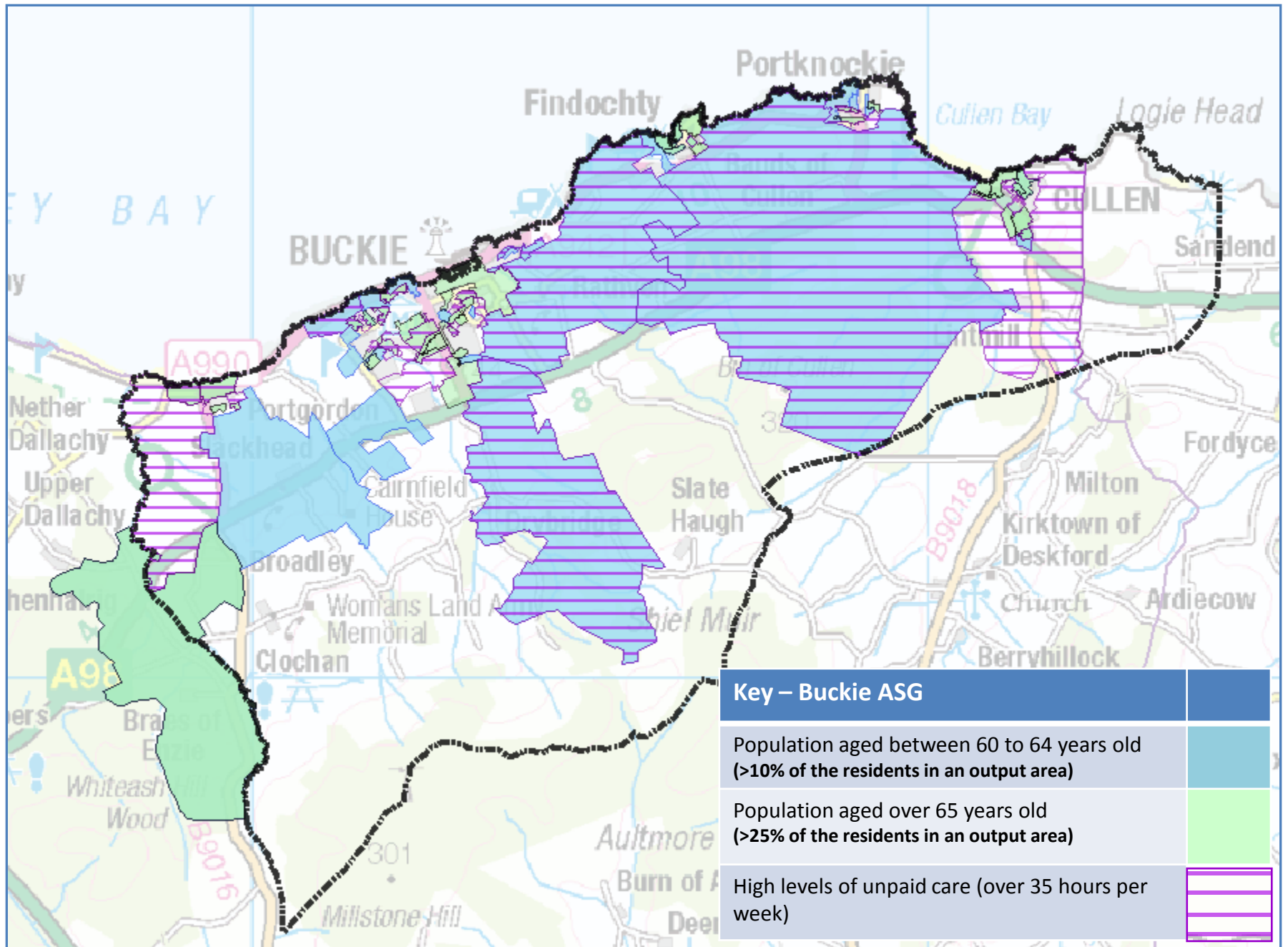


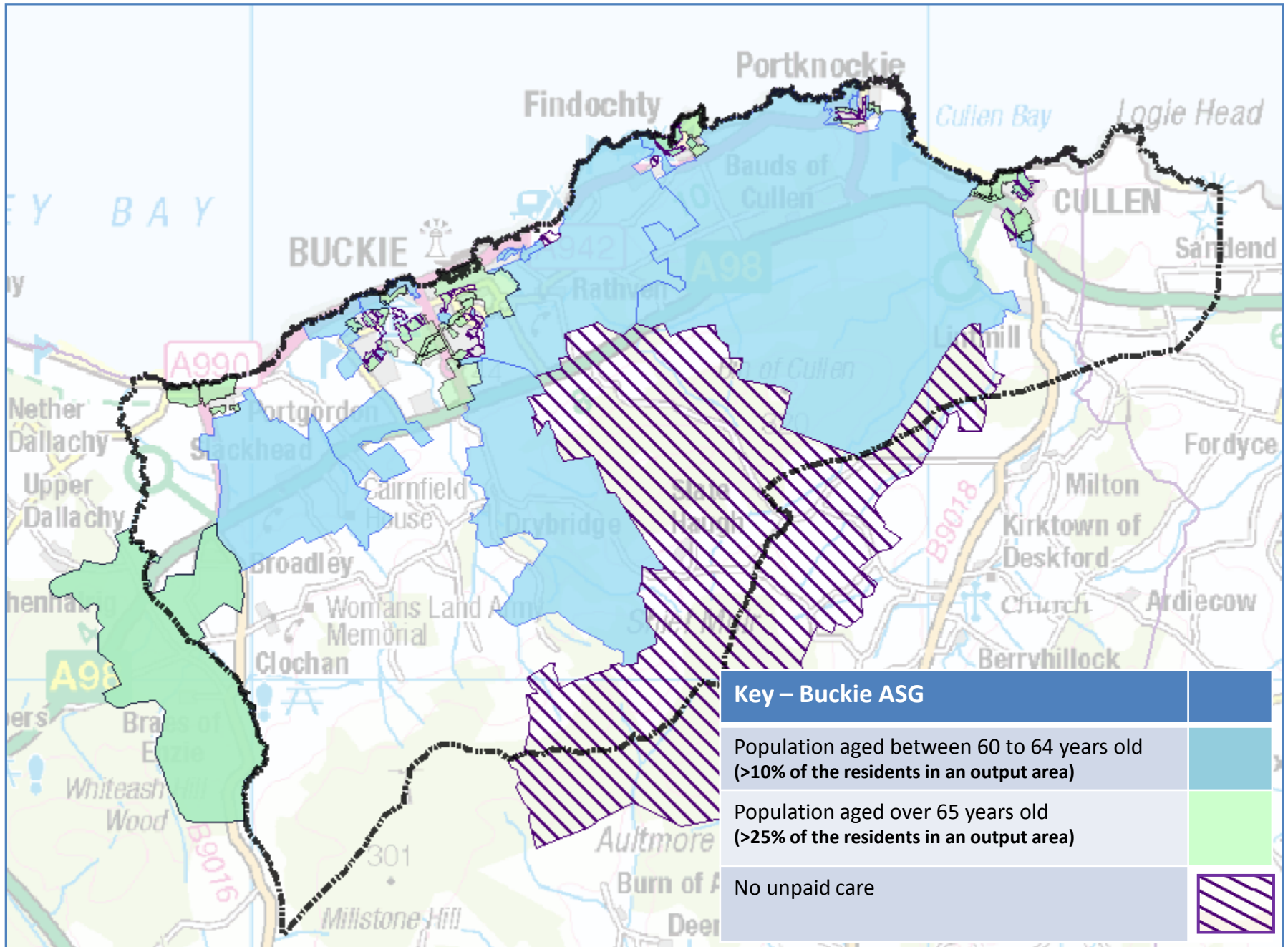
# **BUCKIE – EDUCATION**



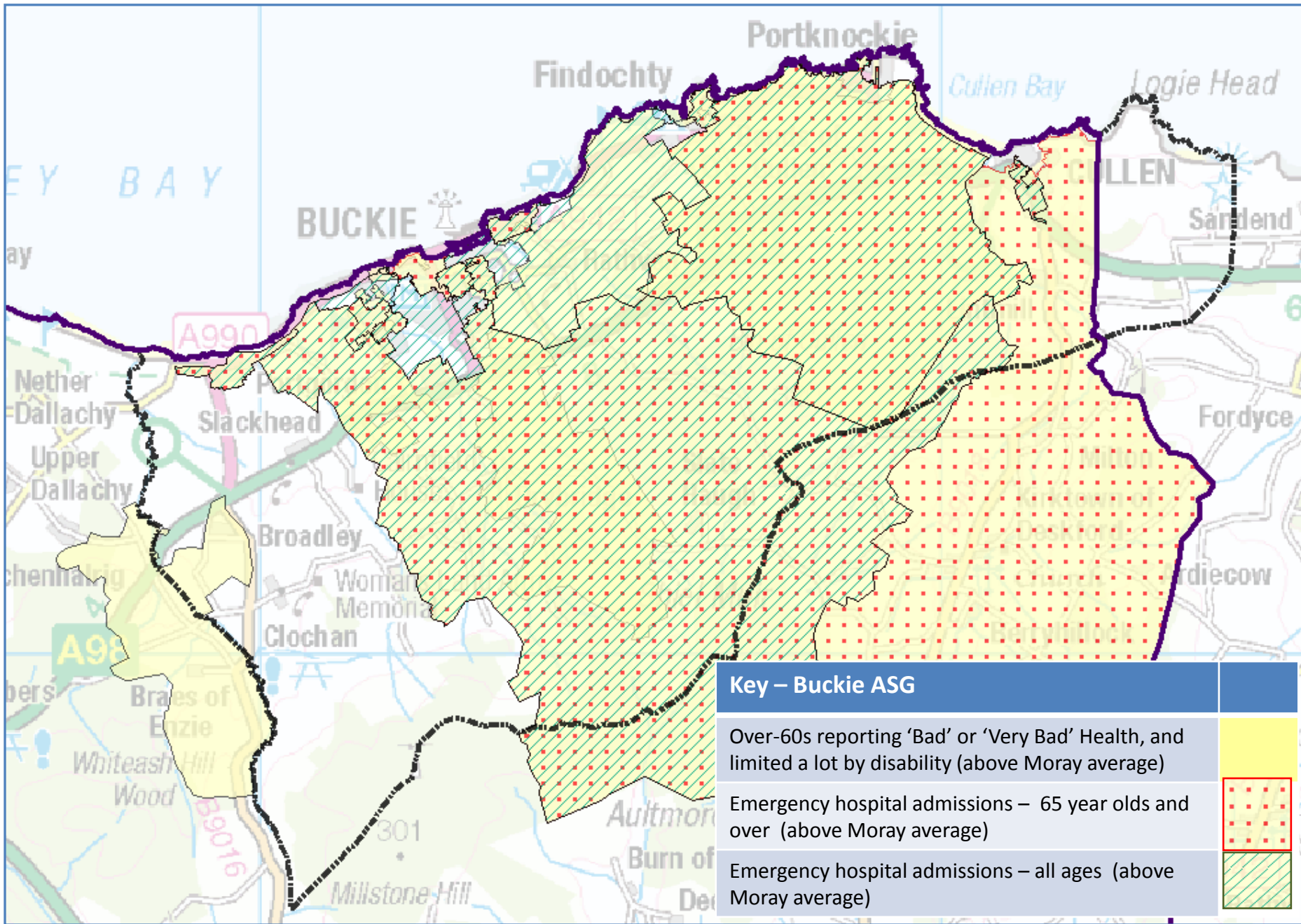


# **BUCKIE – HEALTH AND SOCIAL CARE**

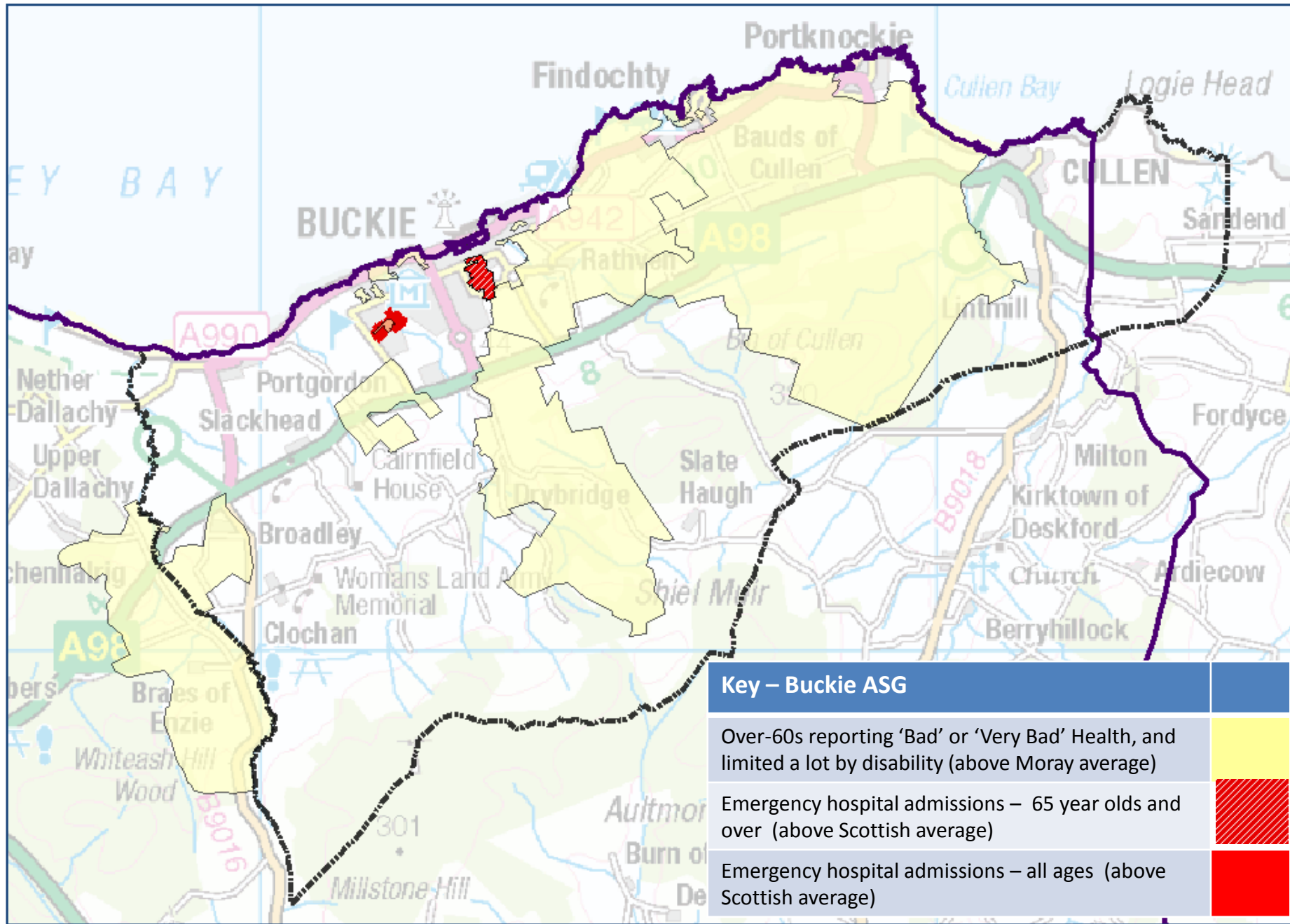


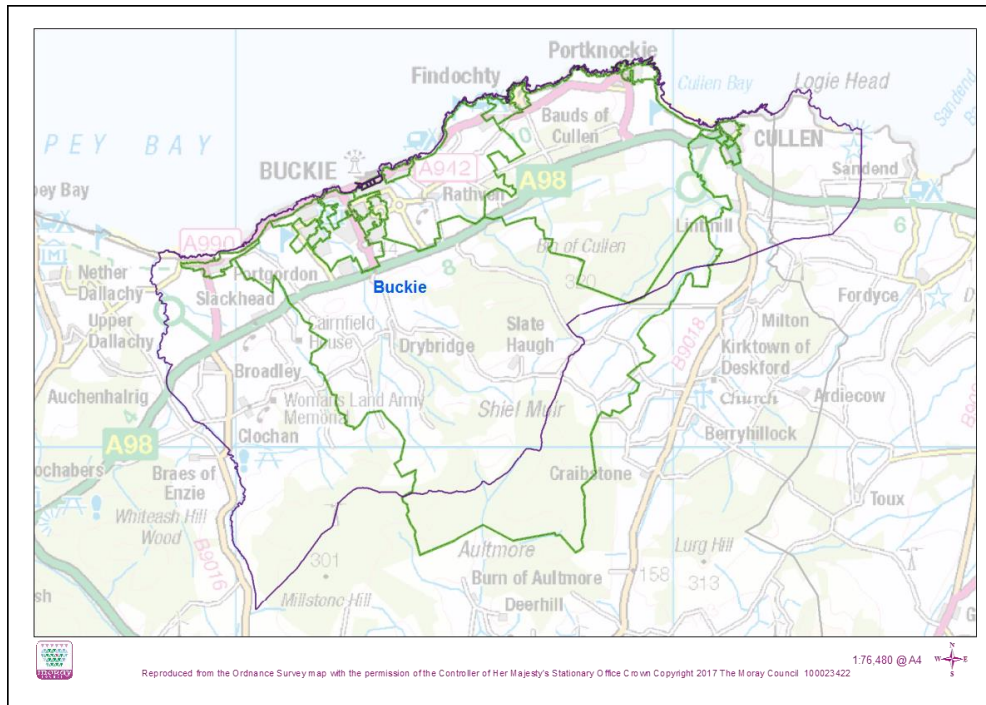


Key – Buckie ASG	
Population aged between 60 to 64 years old (>10% of the residents in an output area)	
Population aged over 65 years old (>25% of the residents in an output area)	
No unpaid care	









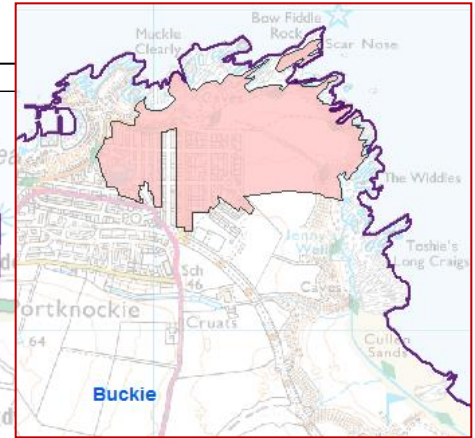
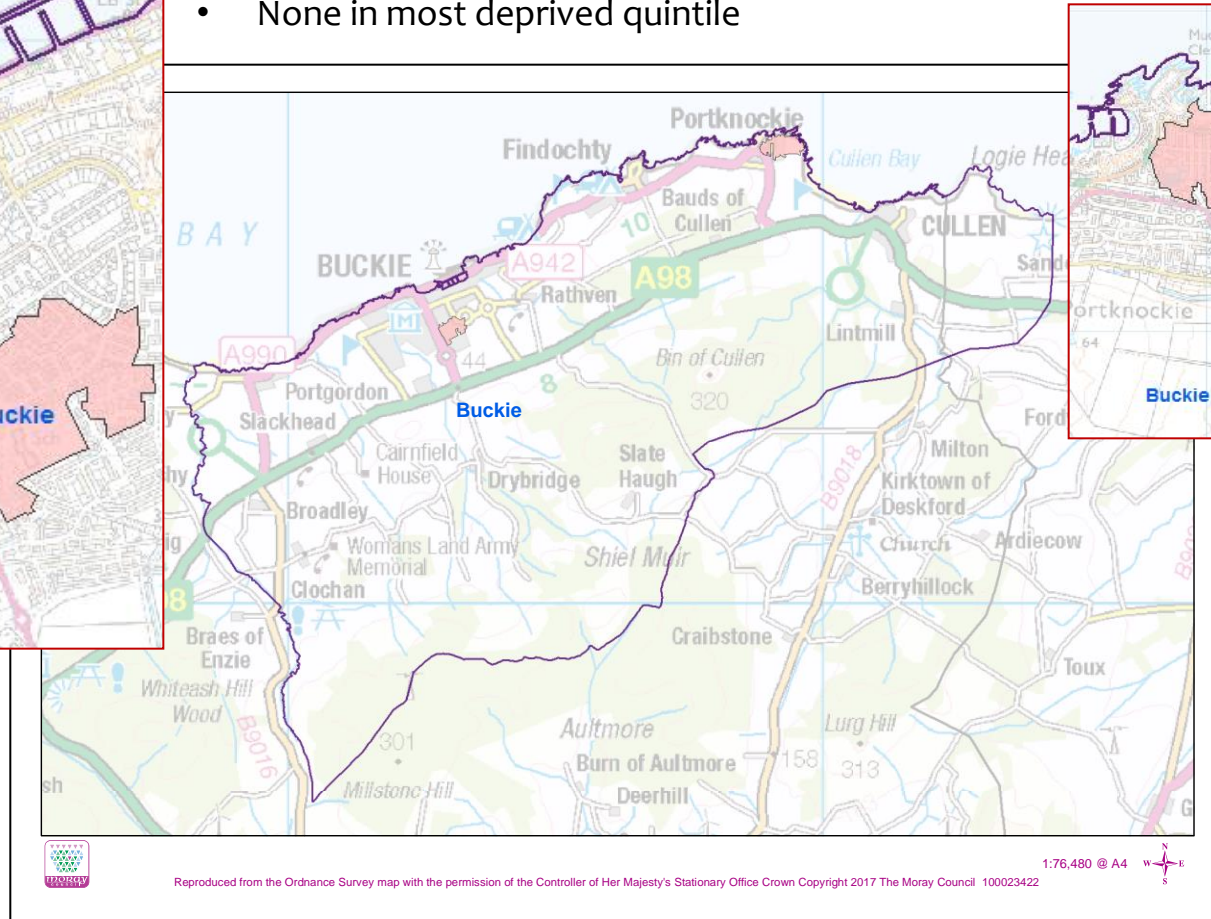
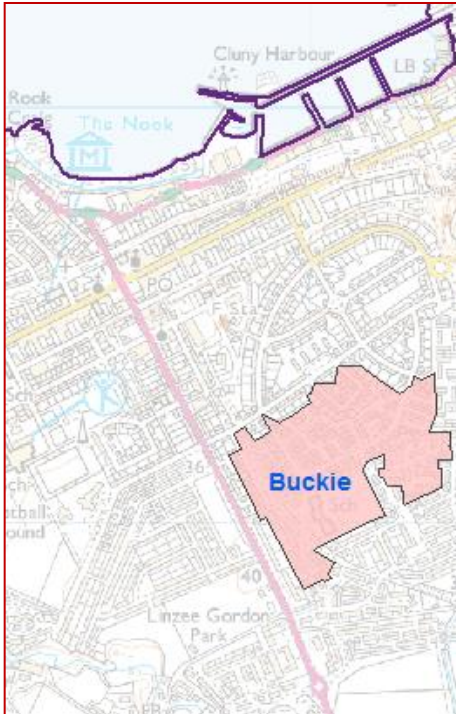
Data-zones in 1<sup>st</sup> and 2<sup>nd</sup> most deprived quintiles  
 18 SIMD 2016 data-zones correspond to the Buckie ASG

# BUCKIE – SIMD DATA

# Buckie – SIMD Quintiles 1 and 2

## - Housing

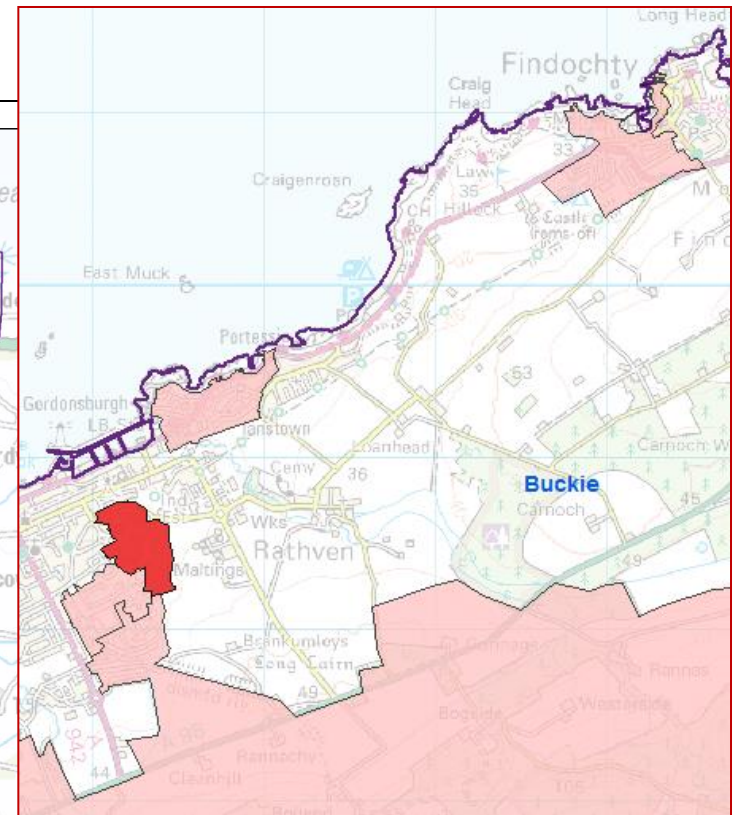
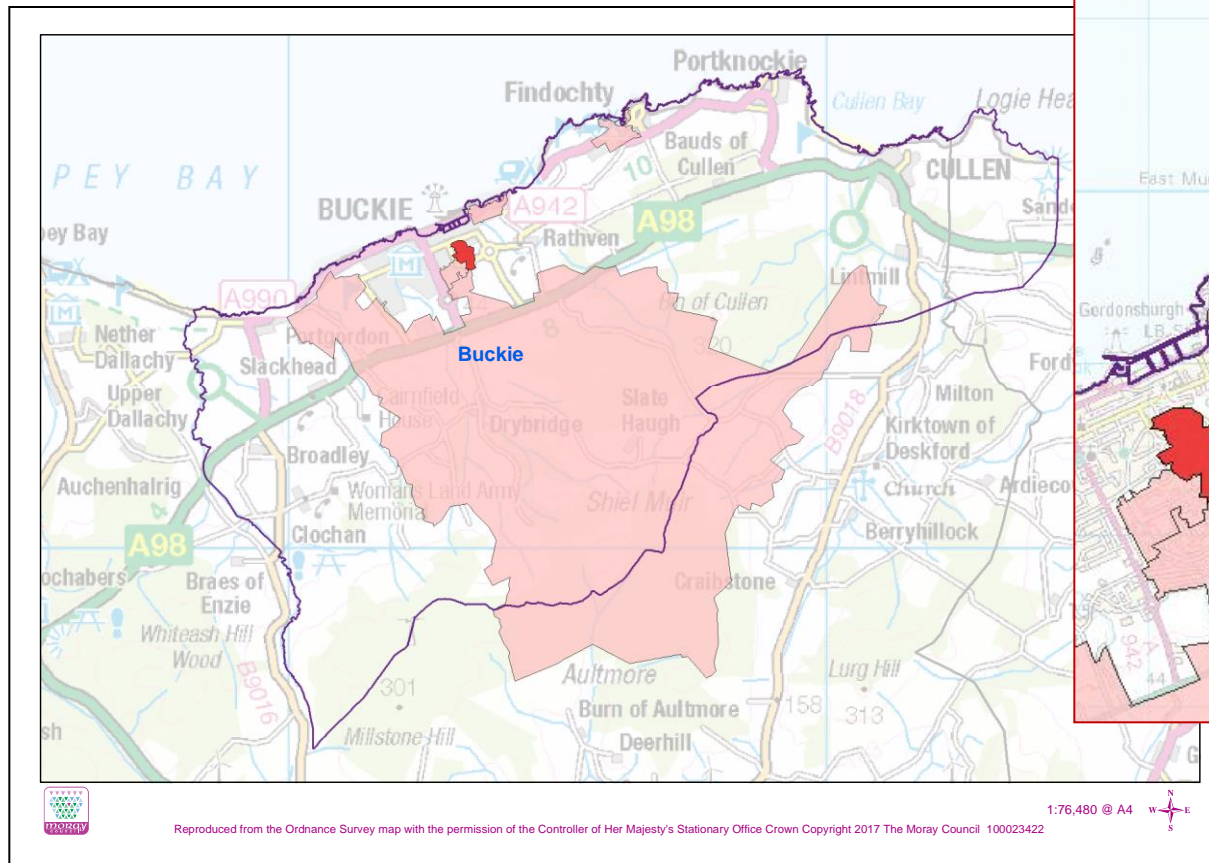
- 2 data-zones in second most deprived quintile
- None in most deprived quintile



# Buckie – SIMD Quintiles 1 and 2

## - Education

- 4 data-zones in second most deprived quintile
- One data-zone in most deprived quintile

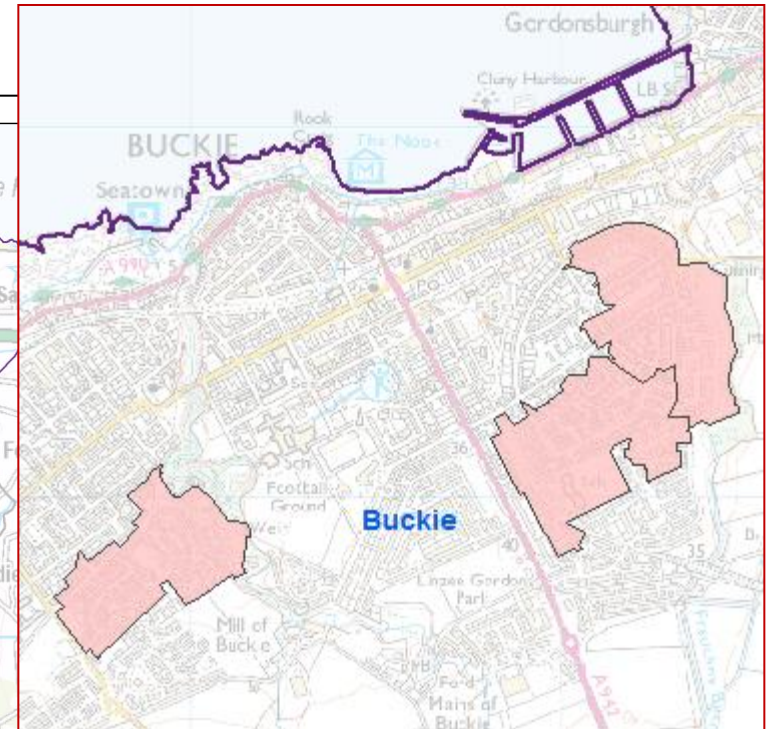
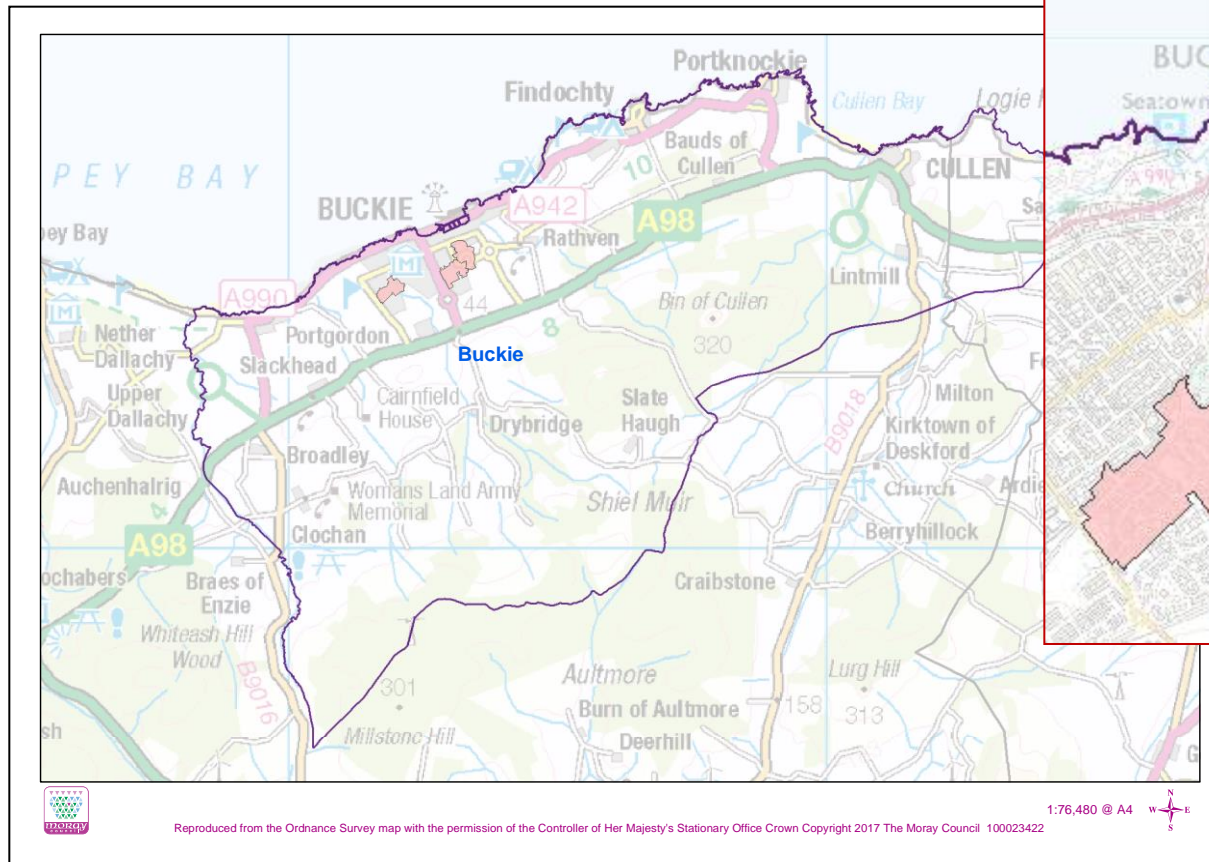


# Buckie – SIMD Quintiles 1 and 2 - Health

- Buckie ASG has no data-zones in most deprived or second most deprived quintile for health

# Buckie – SIMD Quintiles 1 and 2 - Employment

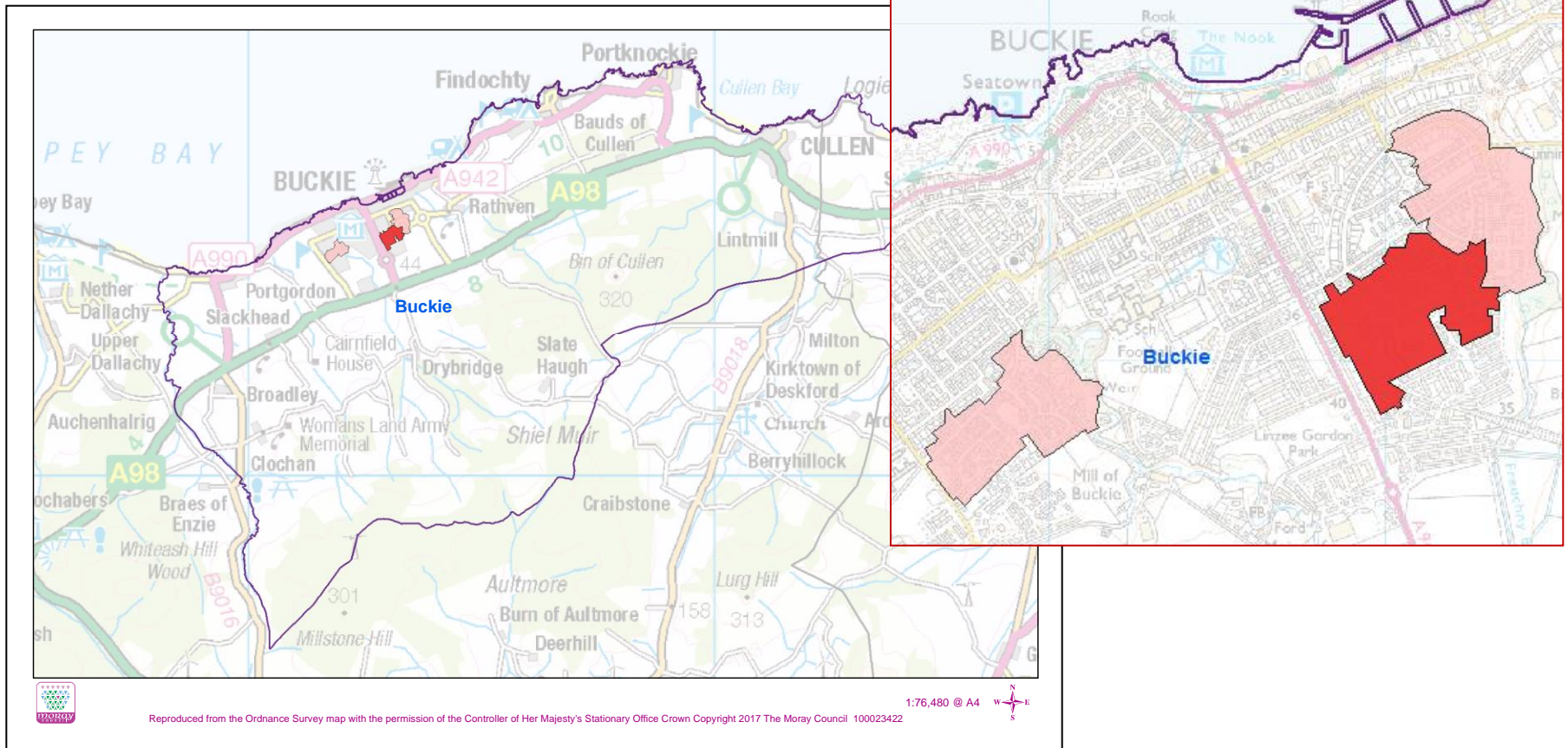
- 3 data-zones in second most deprived quintile
- None in most deprived quintile



# Buckie – SIMD Quintiles 1 and 2

## - Income

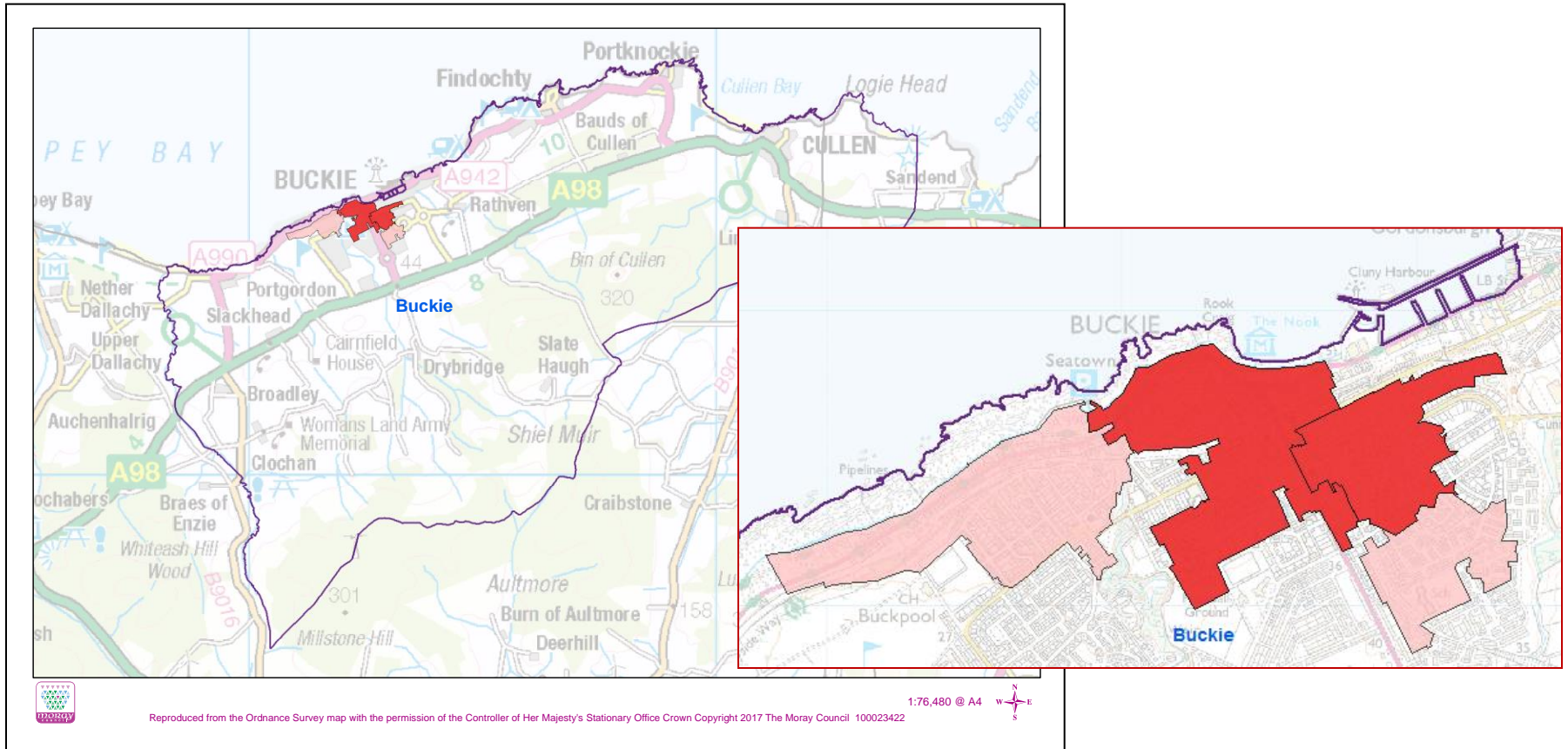
- 2 data-zones in second most deprived quintile
- One data-zone in most deprived quintile



# Buckie – SIMD Quintiles 1 and 2

## - Crime

- 2 data-zones in second most deprived quintile
- 2 data-zones in most deprived quintile





# Buckie – SIMD Quintiles 1 and 2

## - Access

- 5 data-zones in second most deprived quintile
- 2 data-zones in most deprived quintile

